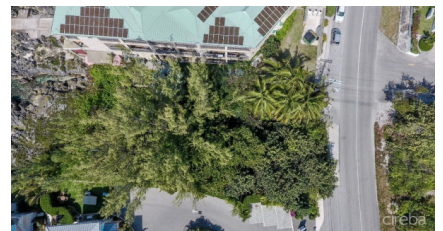
**CI\$1,595,000**

The information contained herein has been furnished by the owner and or their nominee and represented by them to be accurate. The listing company, agent and CIREBA MLS disclaims any liability or responsibility for any inaccuracies, errors or omissions in the represented information and all the information contained herein is subject to errors, omissions, price changes, prior sale or withdrawal, without notice and is at all times subject to verification by the purchaser.



**ALAN O'CONNELL**  
alan.oconnell@remax.ky

Welcome to a rare opportunity to own an elevated parcel of waterfront land to build your dream home! Nestled along North West Point Road, this spectacular 0.4 acre seafront house lot offers an unparalleled canvas for your dream waterfront property. Imagine waking up to the soothing sound of waves gently lapping against the shore and being greeted by breathtaking panoramic views of the Caribbean Sea. This west-facing lot promises not only a prime location but also a front-row seat to nature's daily masterpiece – incredible sunset views. The possibilities are endless as you embark on the journey to design and build your coastal retreat. This generous 0.4 acre parcel provides ample space for creating a private oasis with lush gardens, a pool overlooking the sea, or a luxurious outdoor entertaining area. Whether you envision a contemporary masterpiece, a traditional coastal haven, or a tropical paradise-inspired residence, this lot is the perfect foundation for realizing your vision. The North West Point Road location ensures convenience and exclusivity, with easy access to Seven Mile Beach, while having all the amenities of the vibrant local West Bay community on your doorstep. Create a lifestyle where every day feels like a vacation. Seize this rare opportunity to own a piece of the Caribbean dream. Contact me today for additional information. Your dream home awaits!

Essential Information

Type	Status	MLS#	Listing Type
Land	Pen/Con	417250	Beach Resort Residential

Key Details

Width	Depth
67	268
Acreage	View
0.40	Water Front, Water View

Additional Feature

Zoning	Covenants	Approx. Water Frontag	Road Frontage
Beach Resort/Residential	No	Yes	Yes
Soil			
Rock			

The information contained herein has been furnished by the owner and or their nominee and represented by them to be accurate. The listing company, agent and CIREBA MLS disclaims any liability or responsibility for any inaccuracies, errors or omissions in the represented information and all the information contained herein is subject to errors, omissions, price changes, prior sale or withdrawal, without notice and is at all times subject to verification by the purchaser.