



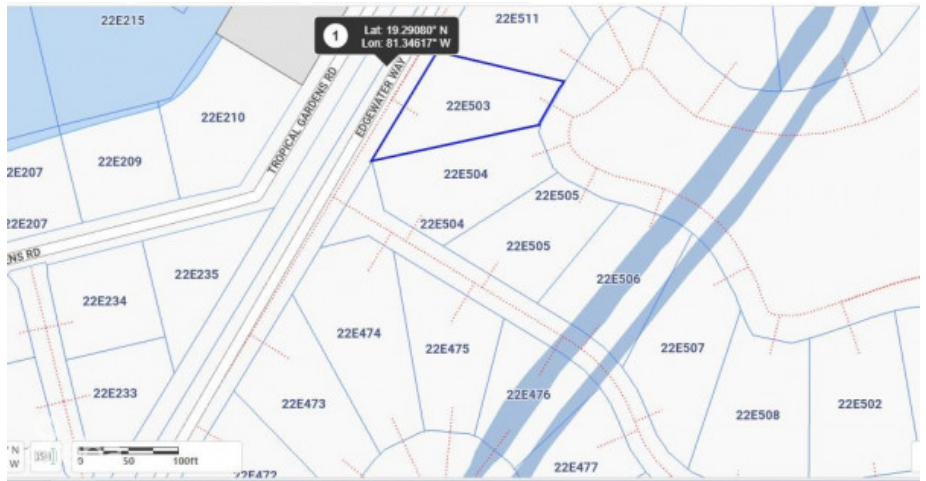
256 Crighton Building, Crewe Rd, PO BOX 1977,  
Grand Cayman, KY1-1104, Cayman Islands  
Phone: +1 (345) 949-7099  
Fax: +1 (345) 949-6819  
Email: info@cireba.com

## Harbour Reach

Prospect/Spotts, Grand Cayman

MLS# 419227

**CI\$695,000**



**JERMAINE PERKINS**

jermaine@tridentproperties.ky

Prime location, in a sought-after community on the canal, in a serene environment under CI 500K, sounds like paradise & It Is paradise. Canal view house lot in the prestigious Harbour Reach community in Grand Harbour. Harbour Reach is Canal lot community with direct access to the North Sound with a cantilevered 40 foot dock, this and these lots are all filled with compacted aggregate and safety retained by a keystone seawall which means there is no need for the added expense of pilings. Harbour Reach offers a 24-7 manned gatehouse with strong covenants to ensure high standards and quality upliftment of this beautifully landscaped community conveniently located within walking distance of Harbour Walk complex & Grand Harbour Shopping Complex with restaurants, caf, Hurleys supermarket. Agent Owned

## Essential Information

Type	Status	MLS#	Listing Type
<b>Land</b>	<b>Current</b>	<b>419227</b>	<b>Low Density Residential</b>

## Key Details

Width	Depth
<b>95</b>	<b>135</b>
Acreage	View
<b>0.26</b>	<b>Canal View</b>