



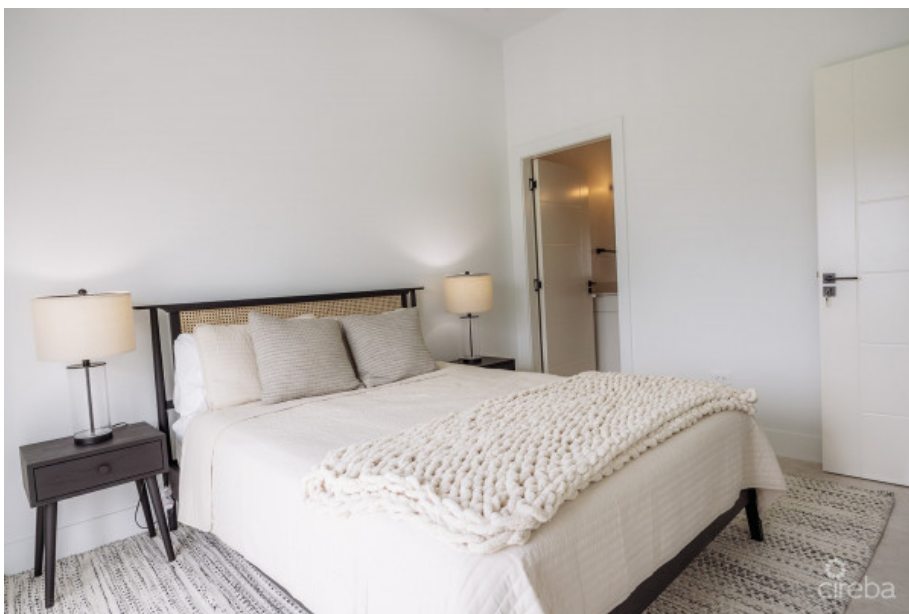
256 Crighton Building, Crewe Rd, PO BOX 1977,  
Grand Cayman, KY1-1104, Cayman Islands  
Phone: +1 (345) 949-7099  
Fax: +1 (345) 949-6819  
Email: info@cireba.com

## 3 Bedroom 3.5 Bathroom - The Meadows At Batabano Phase 2 - The Pineapple

West Bay, Grand Cayman

MLS# 419284

**CI\$950,000**



**DEBI BERGSTROM**  
345 946-3343  
dbergstrom@edgewater.ky



**ELLA BERGSTROM**  
emulroy@edgewater.ky

Introducing Pineapple, our largest and most luxurious townhome, spread across three beautifully designed floors. The ground floor features an expansive, fully equipped living and kitchen area that opens up to a private patio, perfect for seamless indoor-outdoor living. On the second floor, you'll find two spacious bedrooms, each with its own ensuite bathroom and walk-in closet, along with a conveniently located laundry room. On the third floor, you will find a large open room that can be converted into a sizable master bedroom or used as an equally impressive family room that opens onto a private grand patio, offering North Sound views and is the perfect space to relax and enjoy the beautiful Cayman weather in style.

## Essential Information

Type	Status	MLS#	Listing Type
<b>Residential</b>	<b>Current</b>	<b>419284</b>	<b>Semi-detached / Duplex / Triplex</b>

## Key Details

Bed	Bath	
<b>3</b>	<b>3.5</b>	
View		
<b>Lake View</b>		
Year Built	Sq.Ft.	Pets Allowed:
<b>2025</b>	<b>1,910</b>	<b>Yes</b>

## Additional Feature

Den	Pool
<b>No</b>	<b>Yes</b>