



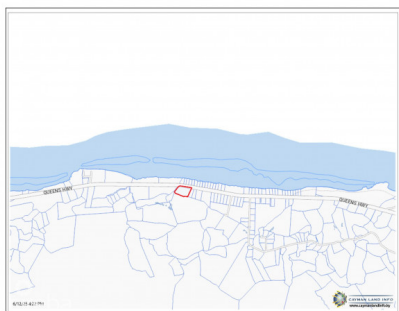
256 Crighton Building, Crewe Rd, PO BOX 1977,
Grand Cayman, KY1-1104, Cayman Islands
Phone: +1 (345) 949-7099
Fax: +1 (345) 949-6819
Email: info@cireba.com

Queens Highway House / Duplex Lot

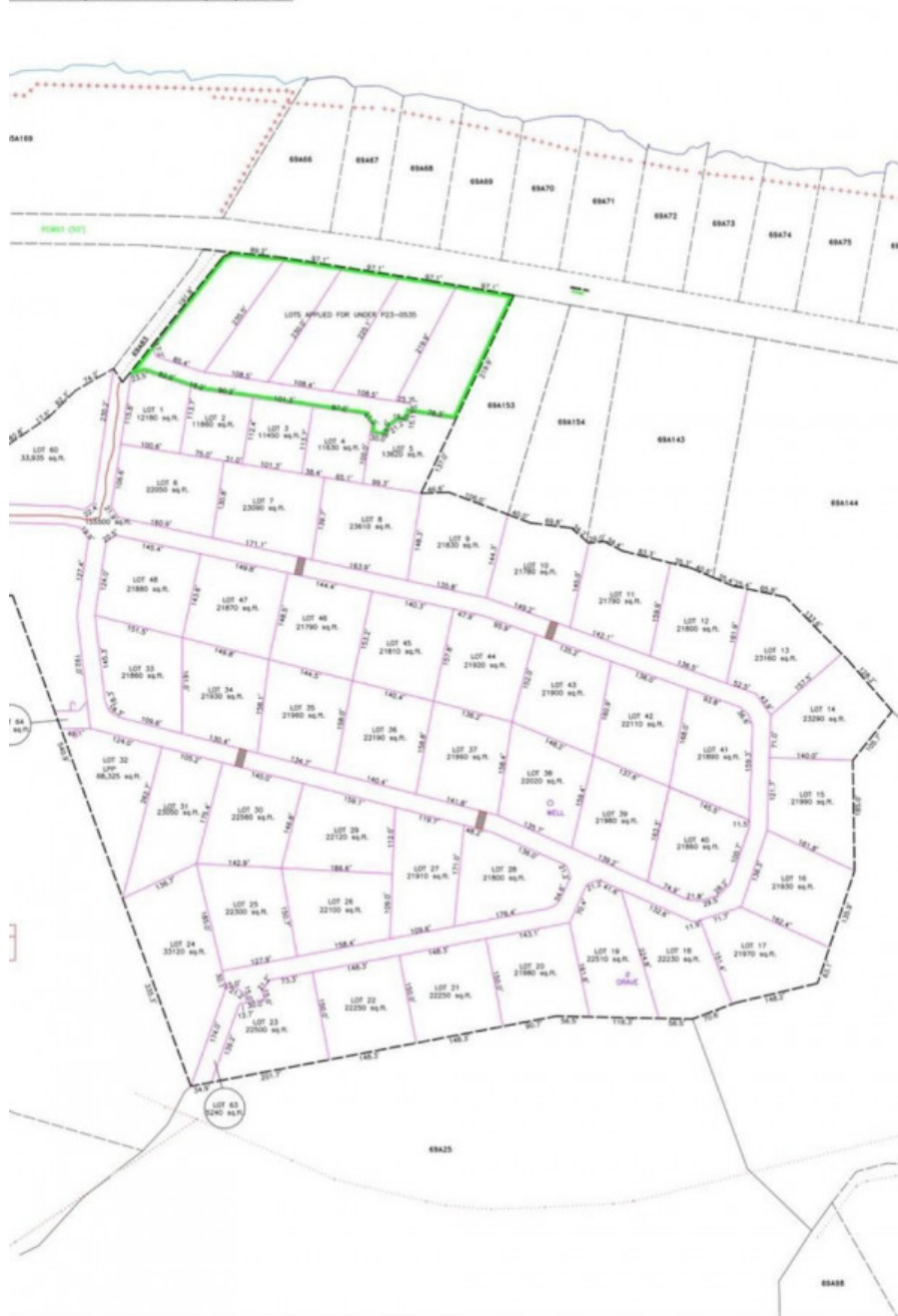
North East Coast / Colliers, Grand Cayman

MLS# 419433

CI\$185,000



CK 69A, PARCELS 1, 2, & 84.





GEMMA HAYLOCK

gemma@williams2realestate.com

Welcome to Queens Highway. Located on the serene North East Coast of the Island, beach access within a short walking distance from this half acre roadside lot. This location is one of the most pristine and tranquil parts of the Cayman Islands, offering the perfect backdrop for your investment property, a luxurious getaway home, or the chance to design and build your ideal residence. A Hidden Gem on the East Coast This perfect piece of property is not just about location, it's about lifestyle. Situated near some of the island's most sought-after tourist attractions, such as the Crystal Caves and the Queen Elizabeth II Botanic Park, this area is a haven for nature lovers. Just a short drive away, you'll find Rum Point and Kaibo, offering quick and easy access to Stingray City, Starfish Point, and an array other water activity. Oversized Lot with Endless Possibilities This oversized lot at 0.46 acre is truly a rare find. Positioned between 24-28 ft above sea level. Whether you're looking to make a smart investment with a duplex or seeking the ideal plot to build your idealhome, this lot offers ample space and flexibility to accommodate your vision. For first-time buyers eager to jump on the property ladder, this is an unbeatable opportunity. A Sanctuary Close to Adventure Waking up every morning to the incredible sunrises and the tranquility of the North East Coast. Garland Estates provides the perfect balance of seclusion and accessibility. Whether you want to explore the island's natural wonders or simply relax in your own private sanctuary, this location delivers the best of both worlds. Secure Your Future on The Queens Highway Don't miss out on the opportunity to own a piece of paradise. Queens Highway offers convenience, and potential. Perfectly suited for investors, new homeowners, or those looking to create a bespoke living experience, this subdivision is your gateway to an unparalleled island lifestyle. Contact today to find out more about this fantastic lot and how you can secure your own slice of paradise. How do you want to live your life?

Essential Information

Type Land	Status Pen/Con	MLS# 419433	Listing Type Low Density Residential
---------------------	--------------------------	-----------------------	--

Key Details

Width 89	Depth 235
Acreage 0.46	View Garden View, Ocean View

The information contained herein has been furnished by the owner and or their nominee and represented by them to be accurate. The listing company, agent and CIREBA MLS disclaims any liability or responsibility for any inaccuracies, errors or omissions in the represented information and all the information contained herein is subject to errors, omissions, price changes, prior sale or withdrawal, without notice and is at all times subject to verification by the purchaser.