



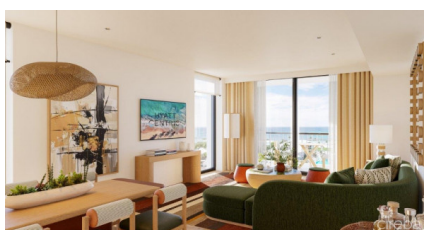
256 Crighton Building, Crewe Rd, PO BOX 1977,  
Grand Cayman, KY1-1104, Cayman Islands  
Phone: +1 (345) 949-7099  
Fax: +1 (345) 949-6819  
Email: info@cireba.com

## Hyatt Centric Resort - Beach View 1br Inside Corner

Seven Mile Beach, Grand Cayman

MLS# 419424

**US\$1,745,000**





**KIM LUND**  
345-949-9772  
kim.lund@remax.ky

JUST ANNOUNCED AND CURRENTLY SELLING AT LOW PRE-CONSTRUCTION PRICES - HUGE POTENTIAL FOR SUBSTANTIAL CAPITAL APPRECIATION. This superb beach view corner Suite is really well designed and has some incredible views. The bedroom and the living room/dining room are on the beachfront side and both have beach views. Additional side window for some extra natural light and views. The residence looks out through the center opening of Sunset Cove, across the pools and landscaping out to the sandy beach and Caribbean Sea. And there are always amazing sunset views, all year long. A large, ample sized residence and great price point. Perfect for an owner's use and/or solid resort rental income. Complete with a full kitchen, washer/dryer, and owner's lock-off closet.

Construction is planned to start early next year and complete in 2028. There is a vast array of resort facilities, services, and amenities; large freeform pool with full service bar and grill, beach lagoon protected by breakwater barriers to ensure sandy beachfront at all times, rooftop restaurant/bar and lounge featuring island wide views, Caf and Marketplace, 3 meal restaurant with indoor/outdoor seating, food and beverage service planned for beach area, pickleball/tennis courts, fitness Studio, ballroom event facilities and boardroom, 24 hour room front desk and security, concierge and valet service, room service, and much more. Truly a tremendous value for this very prestigious residence supported by a prominent international resort brand!

## Essential Information

Type	Status	MLS#	Listing Type
<b>Residential</b>	<b>Current</b>	<b>419424</b>	<b>Condominiums</b>

## Key Details

Bed	Bath
<b>1</b>	<b>1.5</b>

View  
**Beach View**

Year Built	Sq.Ft.	Pets Allowed:
<b>2028</b>	<b>1,100</b>	<b>Yes</b>

## Additional Feature

Den	Floor Level	Furnished
<b>No</b>	<b>5</b>	<b>No</b>