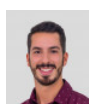
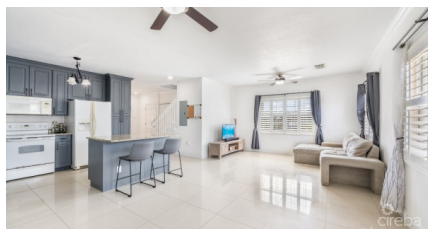


Suelles Estates #1 End Unit

West Bay, Grand Cayman

MLS# 419242

CI\$570,000



MITCHELL HILLIER

mitchell.hillier@remax.ky

Suelles Estates #1 is a 4 Bedroom 3.5 Bathroom 2,390sq ft end unit Duplex located in central West Bay. This rare property offers an expansive wide open lay out comfortably fitting growing families, visitors, or multiple tenants. The main floor hosts 2 master bedrooms both with large ensuite bathrooms, and walk in closets, centred around an open floor plan living room and kitchen, with access to a powder room, and washer/dryer. With this being an end unit, it is easy to take advantage of the extra window space throughout allowing for plenty of natural light. Upstairs you will find 2 additional spacious bedrooms, with shared access to a bathroom with double vanity, and a landing with a large storage closet. There is also plenty of room in the attic for additional storage as well. This corner lot gives new owners an abundance of outdoor space which can easily be fully gated for gardening, hosting, or allowing children to play freely. There is quite literally nothing like it on the market!

Essential Information

Type	Status	MLS#	Listing Type
Residential	Reduced	419242	Semi-detached / Duplex / Triplex

Key Details

Bed	Bath	
4	3.5	
View		
Inland		
Year Built	Sq.Ft.	Pets Allowed:
2010	2,390	Yes

Additional Feature

Den	Pool	Furnished
No	No	Yes