



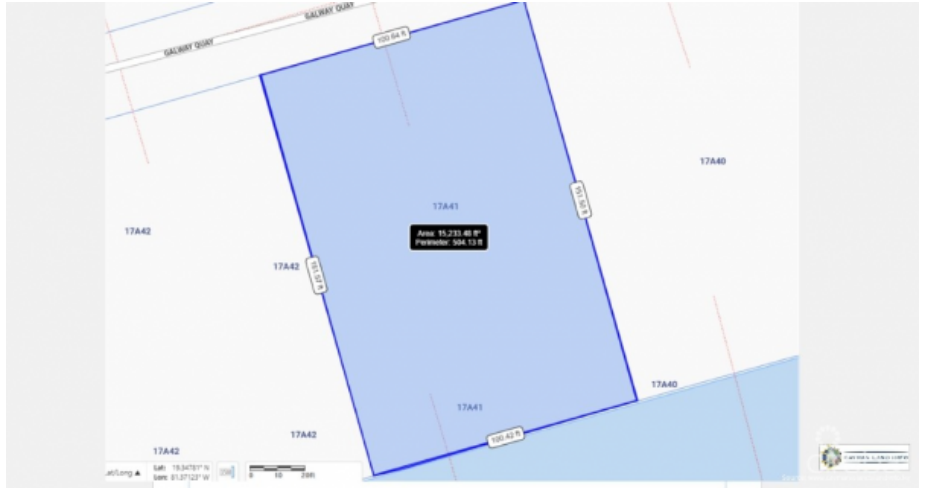
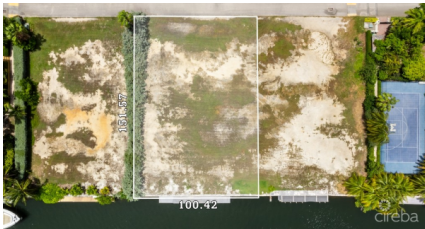
256 Crighton Building, Crewe Rd, PO BOX 1977,  
Grand Cayman, KY1-1104, Cayman Islands  
Phone: +1 (345) 949-7099  
Fax: +1 (345) 949-6819  
Email: info@cireba.com

## Galway Quay, Crystal Harbour Parcel | 0.35 Acres

Seven Mile Corridor, Grand Cayman

MLS# 418021

**US\$1,375,000**



**JAMES BOVELL**

345-945-4000

james.bovell@remax.ky

This incredible canal front 0.35-acre lot is situated on Galway Quay, in the neighborhood of the prestigious Crystal Harbour. This lot spans 152 ft in depth with an approximate water frontage of 100ft, and the site is 4-5 ft above sea level. Zoned as a low-density residential this site offers lots of development opportunities to build your single-family dream home. While enjoying the incredible sunsets and sunrise views, overlooking the entire Governors Sound.

Crystal Harbour is a lovely private gated community featuring high-end homes, lots of families, safe areas for jogging and bicycling along with a golf course with 24hr security at the gate. This area is building out quickly and there won't be very many lots of sale for much longer. This lot is priced to sell quickly and offers great value in comparison to where the current market seems to be going.

Conveniently located in the heart of Seven Mile Beach with access to the beach, restaurants, Camana Bay, George Town, and shops.

Call us for more information!

## Essential Information

|             |                |               |                                |
|-------------|----------------|---------------|--------------------------------|
| Type        | Status         | MLS#          | Listing Type                   |
| <b>Land</b> | <b>Pen/Con</b> | <b>418021</b> | <b>Low Density Residential</b> |

## Key Details

|             |                                |
|-------------|--------------------------------|
| Width       | Depth                          |
| <b>101</b>  | <b>152</b>                     |
| Acreage     | View                           |
| <b>0.35</b> | <b>Canal Front, Canal View</b> |