



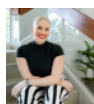
256 Crighton Building, Crewe Rd, PO BOX 1977,  
Grand Cayman, KY1-1104, Cayman Islands  
Phone: +1 (345) 949-7099  
Fax: +1 (345) 949-6819  
Email: info@cireba.com

## 0.65 Acre Parcel W/elevated Sea Views

North East Coast / Colliers, Grand Cayman

MLS# 419273

**CI\$335,000**



**MARIA SANCHEZ**  
maria@c21cayman.com

This 0.65-acre parcel on Queen's Highway offers an exceptional opportunity with panoramic ocean views and a prime location. Sitting 25 feet above sea level, the elevated position ensures unobstructed views of the stunning Caribbean Sea, providing a perfect setting for your dream property. The gentle rise in elevation offers an ideal balance of accessibility and breathtaking views, while the expansive lot allows for various development possibilities. Whether you're envisioning a luxurious home, boutique resort, or simply a private escape, this land promises an unparalleled setting. Don't miss out on this rare gem—an unbeatable combination of size, location, and natural beauty at an exceptional value. Agent owned

## Essential Information

|      |         |        |                         |
|------|---------|--------|-------------------------|
| Type | Status  | MLS#   | Listing Type            |
| Land | Current | 419273 | Low Density Residential |

## Key Details

The information contained herein has been furnished by the owner and or their nominee and represented by them to be accurate. The listing company, agent and CIREBA MLS disclaims any liability or responsibility for any inaccuracies, errors or omissions in the represented information and all the information contained herein is subject to errors, omissions, price changes, prior sale or withdrawal, without notice and is at all times subject to verification by the purchaser.

Width

**86**

Depth

**348**

Acreage

**0.65**

View

**Ocean View**