



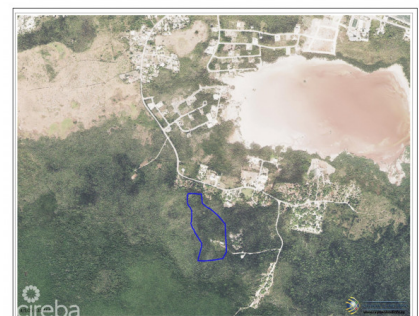
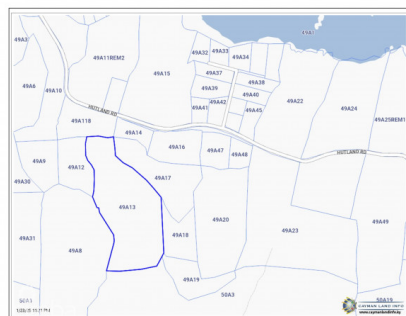
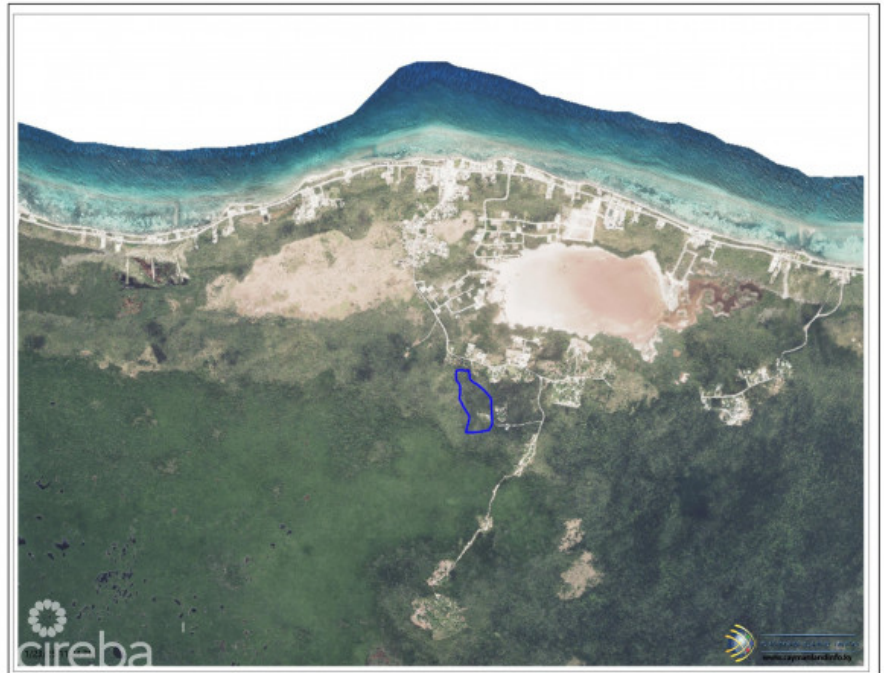
256 Crighton Building, Crewe Rd, PO BOX 1977,  
Grand Cayman, KY1-1104, Cayman Islands  
Phone: +1 (345) 949-7099  
Fax: +1 (345) 949-6819  
Email: [info@cireba.com](mailto:info@cireba.com)

## Prime 12-acre Land Opportunity Off Hutland Road In North Side

North Side, Grand Cayman

MLS# 418364

**US\$995,000**





**PHILLIP WOOD**  
345-623-1400  
phillip.wood@evrealestate.com

Prime 12-Acre Land Opportunity in North Side, Grand Cayman  
Discover 12 acres of exceptional agricultural land just off Hutland Road in the serene North Side District of Grand Cayman. This expansive property, once home to the Canaan Land Home Facility, offers remarkable potential for various uses. With its generous acreage and favorable location, this land is ideal for developers looking to create a subdivision of spacious residential lots. Alternatively, its rich soil and expansive layout make it perfectly suited for agricultural purposes, offering ample space for farming, greenhouses, or eco-tourism ventures. Located within easy reach of North Side’s community amenities yet tucked away for privacy and tranquility, this property presents a unique investment opportunity for those envisioning growth in Grand Cayman’s flourishing real estate or agricultural sectors.  
\*\*Photos courtesy of Cayman Land info.

Essential Information

Type	Status	MLS#	Listing Type
Land	Current	418364	Agriculture

Key Details

Width	Depth
610	1,192
Acreage	View
12.00	Inland

Additional Feature

Zoning	Covenants	Soil
Agriculture/Residential	No	Other