



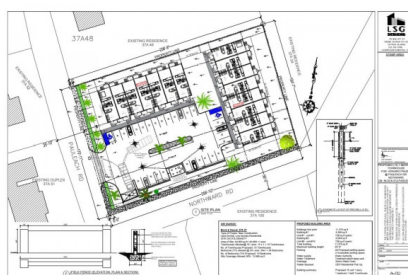
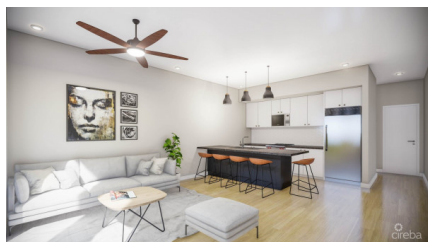
256 Crighton Building, Crewe Rd, PO BOX 1977,  
Grand Cayman, KY1-1104, Cayman Islands  
Phone: +1 (345) 949-7099  
Fax: +1 (345) 949-6819  
Email: info@cireba.com

## North Palm Heights - End Unit #7

Savannah / Lower Valley, Grand Cayman

MLS# 419276

**CI\$335,000**



**YOANA BONILLA**  
yoana@c21cayman.com

Welcome to North Palm Heights a brand-new pre-construction development offering 15 exclusive 1-bedroom, 1-bathroom units, each with 760 sq. ft. of thoughtfully designed modern living. Why choose an end unit? Enjoy added privacy, extra natural light from additional windows, and only one shared wall—enhancing your comfort and tranquility. It's a smart investment and an even better place to call home. Located in the peaceful Northward area, this contemporary complex is ideal for first-time buyers, downsizers, or savvy investors looking for long-term value in a growing community. Refined finishes and elegant interiors make North Palm Heights a standout choice in Cayman. Opportunities like this are rare. Don't wait—secure your spot in this stylish new community today.

## Essential Information

Type	Status	MLS#	Listing Type
<b>Residential</b>	<b>Current</b>	<b>419276</b>	<b>Condominiums</b>

## Key Details

Bed	Bath
<b>1</b>	<b>1</b>

View  
**Garden View**

Year Built	Sq.Ft.	Pets Allowed:
<b>2025</b>	<b>760</b>	<b>Yes</b>

## Additional Feature

Den	Floor Level	Furnished
<b>No</b>	<b>1</b>	<b>Partially</b>

## Property Feature

Yes	Yes
<b>Carport</b>	<b>Fenced Yard</b>