



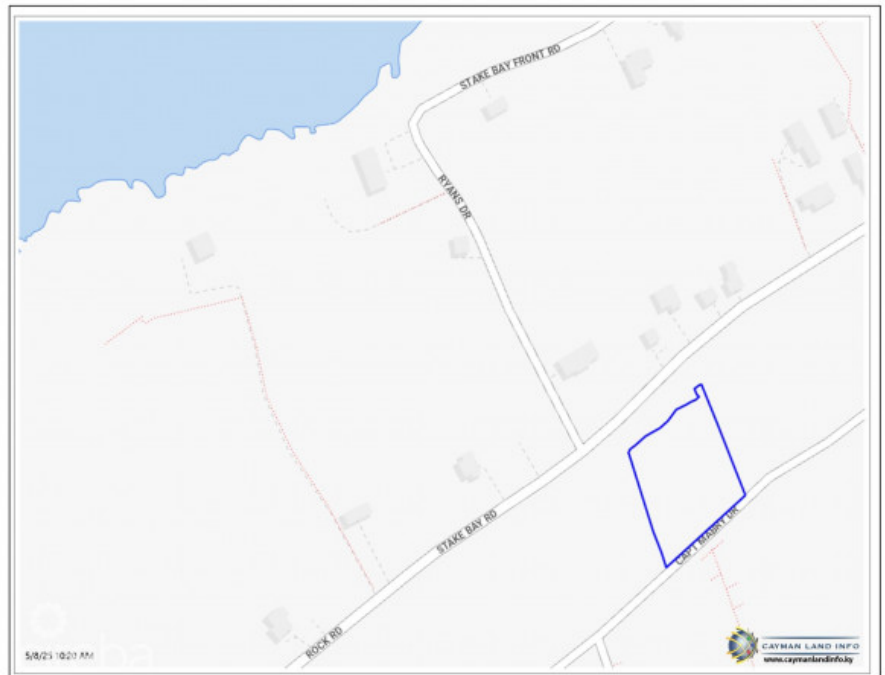
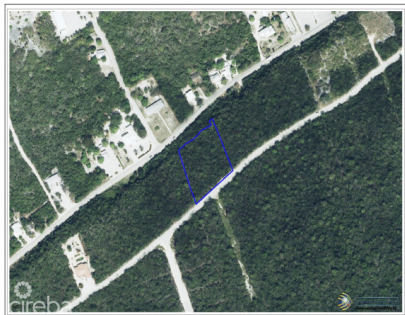
256 Crighton Building, Crewe Rd, PO BOX 1977,
Grand Cayman, KY1-1104, Cayman Islands
Phone: +1 (345) 949-7099
Fax: +1 (345) 949-6819
Email: info@cireba.com

Capt Mabry Dr Cayman Brac Bluff Oversized Parcel

Cayman Brac Centre, Cayman Brac

MLS# 419296

CI\$225,000



DEBI BERGSTROM

345 946-3343

dbergstrom@edgewater.ky

Discover an incredible opportunity to own a spacious, over 1-acre lot on highly sought-after Capt. Mabry Drive. High & Dry - perfect for your dream home or a smart investment property, this prime parcel offers unmatched potential in one of the area's most desirable locations high and dry with 45 ft elevation and gorgeous views! Don't miss your chance to build in a location that blends tranquility, accessibility, and value!

Essential Information

The information contained herein has been furnished by the owner and or their nominee and represented by them to be accurate. The listing company, agent and CIREBA MLS disclaims any liability or responsibility for any inaccuracies, errors or omissions in the represented information and all the information contained herein is subject to errors, omissions, price changes, prior sale or withdrawal, without notice and is at all times subject to verification by the purchaser.

Type	Status	MLS#	Listing Type
Land	Current	419296	Low Density Residential

Key Details

Width	Depth
208	245
Acreage	View
1.17	Garden View