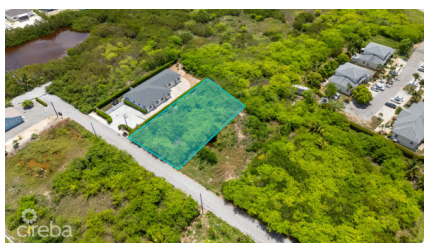
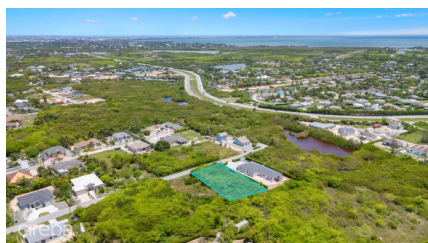


Roses Estates Drive 0.33 Acres, Plans Included

Savannah / Lower Valley, Grand Cayman

MLS# 419464

CI\$275,000





COLLEEN MARTIN
colleen@propertycayman.com

Discover a ready-to-build opportunity in the heart of Savannah. Nestled within the peaceful, family-friendly community of Roses Estate Drive, this large 0.33-acre parcel presents a rare opportunity to build your dream home in a well desired Savannah neighbourhood. Ideally positioned just a short stroll from Countryside Shopping Village, with its array of dining, shops, and everyday conveniences, this location offers the perfect blend of tranquility and accessibility. What truly sets this property apart is that it comes with approved house plans for a spacious 4-bedroom plus den residence, thoughtfully designed with modern family living in mind. The plans include a generous 3,765 square feet under roof, featuring an open-concept living area, well-proportioned bedrooms, and a double garage—all laid out to maximize comfort, functionality, and natural light. With schools, parks, and key amenities just minutes away, this is an ideal setting to establish a long-term family home. Whether you're ready to build now or looking to secure land in a growing and sought-after community, this lot is a smart, future-focused investment.

Essential Information

Type	Status	MLS#	Listing Type
Land	New	419464	Low Density Residential

Key Details

Width	Depth
173	90
Acreage	View
0.33	Garden View