



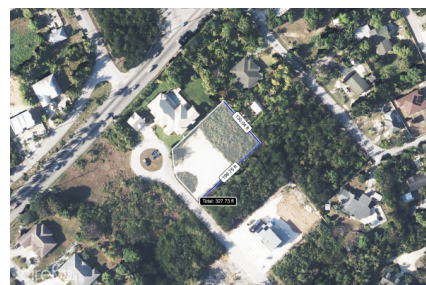
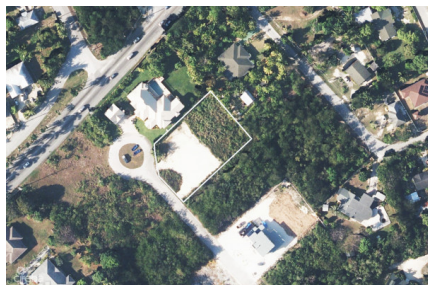
256 Crighton Building, Crewe Rd, PO BOX 1977,
Grand Cayman, KY1-1104, Cayman Islands
Phone: +1 (345) 949-7099
Fax: +1 (345) 949-6819
Email: info@cireba.com

Land 0.57 Acres Savannah

Savannah / Lower Valley, Grand Cayman

MLS# 419488

CI\$330,000





JONATHAN SPARROW
345-623-1234
jonathan.sparrow@sothebysrealty.ky

Situated at the end of picturesque Lavender Way in Savannah, Grand Cayman, this 0.6-acre parcel offers privacy, space, and the perfect setting to build your dream home. Located in a quiet cul-de-sac, the property provides a rare sense of seclusion while remaining just minutes from Countryside Shopping Village, schools, and the southern coastline. The northeast-facing garden captures the island’s gentle morning sun and prevailing breezes—an ideal orientation in Cayman that brings natural light and cool comfort to outdoor living. This subtle advantage adds lasting value and enjoyment to everyday life. Lavender Way itself suggests calm and charm, setting the tone for a home that offers both sanctuary and convenience. Whether you're seeking to create a family home, a tropical retreat, or a long-term investment, this land presents a unique opportunity in a fast-moving market. As land in Grand Cayman becomes increasingly scarce, parcels in peaceful, well-positioned neighbourhoods like this are highly sought after. This is more than just land for sale—it's the beginning of something meaningful. Discover the potential of Lavender Way and imagine what you could build here. A breeze, a sunrise, and a blank canvas await.

Essential Information

Type	Status	MLS#	Listing Type
Land	Current	419488	Low Density Residential

Key Details

Width	Depth
130	195
Acreage	View
0.57	Garden View