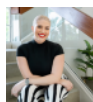


Large Duplex Lot Near Point Of Sand

Little Cayman East, Little Cayman

MLS# 419541

CI\$110,000



MARIA SANCHEZ

maria@c21cayman.com

Nestled near the pristine shores of Point of Sand, one of Little Cayman's most sought-after locations. Set on 16 feet of natural elevation, the property provides stunning, unobstructed ocean views with the added visual charm of Cayman Brac shimmering on the horizon. Whether you're envisioning a private island getaway or a smart investment property, this parcel offers outstanding potential. Just minutes from world-class snorkeling, diving, and the soft white sands of Point of Sand, you'll enjoy the perfect balance of tranquility and accessibility. Opportunities to own elevated land with this kind of view and duplex potential in Little Cayman are becoming increasingly rare. Don't miss your chance to secure a piece of paradise with both lifestyle and investment appeal.

Essential Information

Type	Status	MLS#	Listing Type
Land	Current	419541	Low Density Residential

Key Details

Width
100

Depth
140

Acreage
0.3100

View
Water View