



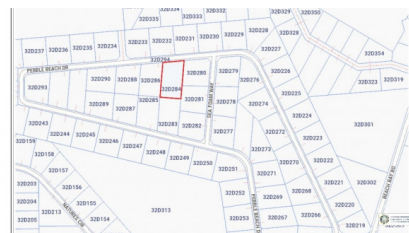
256 Crighton Building, Crewe Rd, PO BOX 1977,
 Grand Cayman, KY1-1104, Cayman Islands
 Phone: +1 (345) 949-7099
 Fax: +1 (345) 949-6819
 Email: info@cireba.com

Pebble Beach Drive House Lot - .3685 Acres

Savannah / Lower Valley, Grand Cayman

MLS# 419546

CI\$328,000



JACQUELINE ZIEMNIAK
 jacqueline.ziemniak@remax.ky

Discover the perfect opportunity to bring your dream project to life on this spacious .3685-acre parcel of vacant land. Nestled in a desirable location, this property offers ample room for a custom home. This lot combines privacy with proximity. Enjoy the peaceful surroundings while being just minutes away from schools, shopping, dining, and essential services. Also a short walk to Beach Bay Public Beach and the new site for the Mandarin Oriental Residences. Sitting at between 31-32 feet above sea level this lot is high and dry. Whether you're looking to build now or hold as a future investment, this lot is an excellent addition. Don't miss out on this chance to secure a great piece of property with endless potential.

Essential Information

Type	Status	MLS#	Listing Type
Land	New	419546	Low Density Residential

The information contained herein has been furnished by the owner and or their nominee and represented by them to be accurate. The listing company, agent and CIREBA MLS disclaims any liability or responsibility for any inaccuracies, errors or omissions in the represented information and all the information contained herein is subject to errors, omissions, price changes, prior sale or withdrawal, without notice and is at all times subject to verification by the purchaser.

Key Details

Width
100

Depth
165

Acreage
0.37

View
Garden View