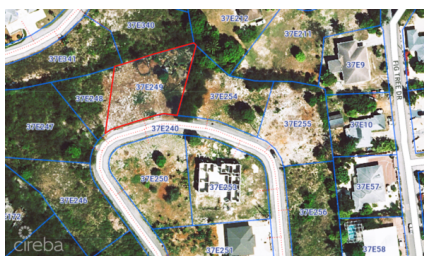
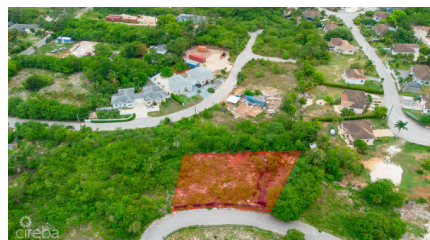


Duplex Lot - Mayfair Crescent - Northward. 0.2873 Acre

Savannah / Lower Valley, Grand Cayman

MLS# 419337

CI\$220,000



JULIET OSBOURNE

juliet@julietosbourne.com

Located in the family-friendly community of Mayfair Crescent, Northward, this lovely 0.2873-acre lot offers the ideal setting for your dream home. Surrounded by lush greenery and the peaceful charm of a secluded neighborhood, it's the perfect escape from the bustle, while still keeping you connected to all the conveniences you need close by. Whether you're planning to build your forever home or invest in the future, this lot is an incredible opportunity. Build your dream. Live your legacy. Contact me today to learn more about this beautiful lot and to make it yours.

Essential Information

The information contained herein has been furnished by the owner and or their nominee and represented by them to be accurate. The listing company, agent and CIREBA MLS disclaims any liability or responsibility for any inaccuracies, errors or omissions in the represented information and all the information contained herein is subject to errors, omissions, price changes, prior sale or withdrawal, without notice and is at all times subject to verification by the purchaser.

Type Land	Status Pen/Con	MLS# 419337	Listing Type Low Density Residential
---------------------	--------------------------	-----------------------	----------------------------------------------------

Key Details

Width 133	Depth 116
Acreage 0.29	View Garden View, Inland