



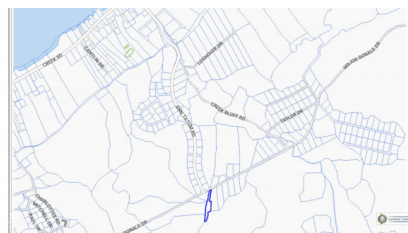
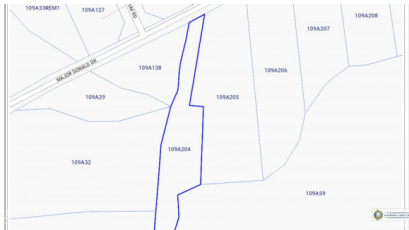
256 Crighton Building, Crewe Rd, PO BOX 1977,  
 Grand Cayman, KY1-1104, Cayman Islands  
 Phone: +1 (345) 949-7099  
 Fax: +1 (345) 949-6819  
 Email: info@cireba.com

## On The Bluff - Cayman Brac Land

Cayman Brac East, Cayman Brac

MLS# 419594

**CI\$70,500**



**SUSAN BOYKO**  
 345-943-7326  
 susan.boyko@remax.ky

Enjoy the cool sea breeze from atop the Bluff. This high-and-dry parcel offers the perfect setting to build your forever home, with ample elevation, privacy, and natural breezes. It also presents an excellent opportunity for a small development, given its size and location. Situated on Major Donald Drive, just half a block past Ann Tatum Road on the right-hand side, the property is conveniently close to the island's shops, hotels, and grocery stores. In addition to this parcel, parcels 109A/205, 206, 207, and 208 are also available. Total 3.95 acres.

## Essential Information

Type <b>Land</b>	Status <b>Current</b>	MLS# <b>419594</b>	Listing Type <b>Low Density Residential</b>
---------------------	--------------------------	-----------------------	--

## Key Details

The information contained herein has been furnished by the owner and or their nominee and represented by them to be accurate. The listing company, agent and CIREBA MLS disclaims any liability or responsibility for any inaccuracies, errors or omissions in the represented information and all the information contained herein is subject to errors, omissions, price changes, prior sale or withdrawal, without notice and is at all times subject to verification by the purchaser.

Width  
**90**

Depth  
**530**

Acreage  
**0.65**

View  
**Inland**