



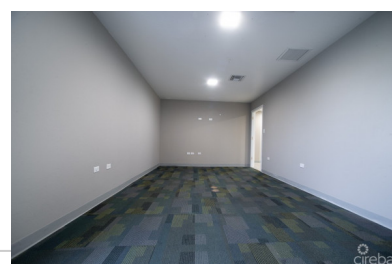
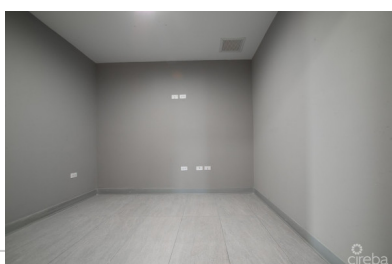
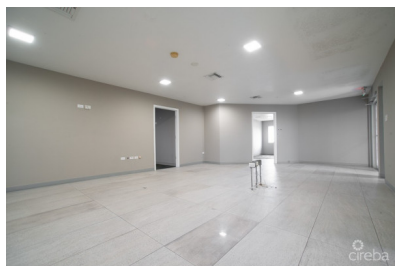
256 Crighton Building, Crewe Rd, PO BOX 1977,
Grand Cayman, KY1-1104, Cayman Islands
Phone: +1 (345) 949-7099
Fax: +1 (345) 949-6819
Email: info@cireba.com

Large Commercial Suite Palm Grove #5 & #6

George Town, Grand Cayman

MLS# 416022

CI\$850,000



The information contained herein has been furnished by the owner and or their nominee and represented by them to be accurate. The listing company, agent and CIREBA MLS disclaims any liability or responsibility for any inaccuracies, errors or omissions in the represented information and all the information contained herein is subject to errors, omissions, price changes, prior sale or withdrawal, without notice and is at all times subject to verification by the purchaser.



HILARY MCKENZIE-CAHILL
hilary@williams2realestate.com

LOCATION LOCATION LOCATION!

This is a tremendous opportunity to own a commercial space in an absolutely prime location in central George Town. Palm Grove is situated on a major 4-way intersection and therefore benefits from very high commercial visibility and brand exposure (through exterior signage). This unit offers 1,554 sq. ft of prime commercial space and is on the first floor and there is both an elevator and stairs. It was 2 separate units that have been combined into one lovely suite of offices/space. The building is low density and is built like a fortress with excellent building integrity and has hurricane rated windows and doors.

The unit is ready to move in, has its own private bathrooms, and a drop tile ceiling to accommodate your IT needs. The building was renovated last year, is energy efficient and has the benefit of solar panels which are part of the CUC CORE agreement, so you will have very low electric bills.

During the building renovation, the entrance corridor was enclosed, air conditioned and sound proofing was added, so although the building is on a busy intersection you are protected for road and aircraft noise.

Just 2 minutes from the hospitals and a stones throw from the airport and Fosters Food Fare, this super commercial space would make an ideal professional office, or a great location for a doctors clinic, chiropractic or physio centre, dentists office, opticians or wellness facility. The building is wheelchair accessible and has ample parking.

If you are looking for a great move-in ready space close to all conveniences of central George Town, then look no further.

If you are an investor looking for a commercial investment in the heart of Caymans capital, this space could offer great rental ROI and potential anticipated capital appreciation over time, due to its central location.

Essential Information

Type	Status	MLS#	Listing Type
Commercial	Current	416022	Offices / Mixed Use

Key Details

Year Built	Sq.Ft.
2011	1,554