



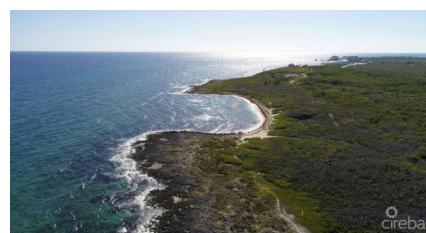
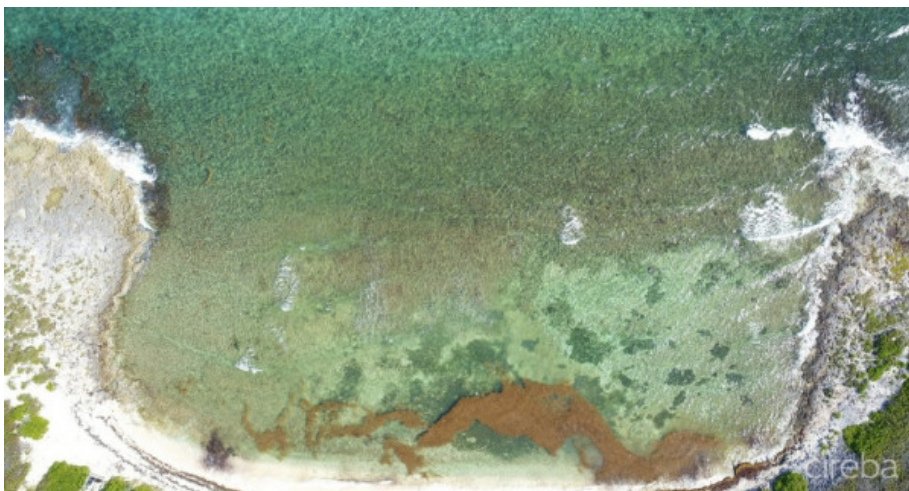
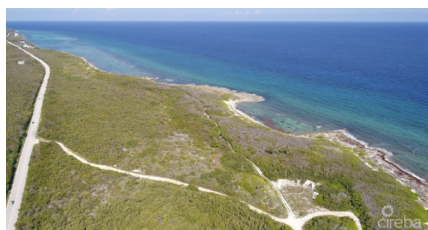
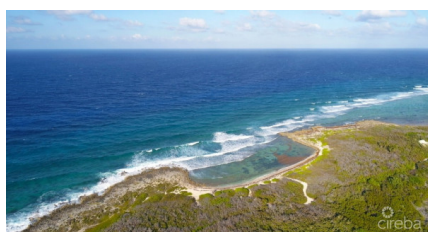
256 Crighton Building, Crewe Rd, PO BOX 1977,
Grand Cayman, KY1-1104, Cayman Islands
Phone: +1 (345) 949-7099
Fax: +1 (345) 949-6819
Email: info@cireba.com

34 Acre Beachfront Development Site

North East Coast / Colliers, Grand Cayman

MLS# 414124

US\$35,000,000



KIM LUND
345-949-9772
kim.lund@remax.ky



VICTORIA IACOVIELLO
vicki.iacoviello@remax.ky

The most spectacular development site on Grand Cayman, which includes the majestic Spotter Bay! This huge site has a very uniquely protected bay with an absolutely stunning, massive sandy beach and thousands more feet of coastline to the east. There just are not any deep development sites like this with the incredible amount of coastline and gorgeous sandy beach. Adjacent to this site is a quickly developing tourism and resort area with hotels, condominiums, homes, and a multitude of facilities and services stretching all the way from Colliers to East End. This is the perfect site for the next major upscale development in Grand Cayman, in an undeniably pristine location. Very likely the last large development site that will have substantial acreage and enormous depth in from the Sea, combined with a protect bay of fabulous beach, and a long coastline to use for development!

Essential Information

The information contained herein has been furnished by the owner and or their nominee and represented by them to be accurate. The listing company, agent and CIREBA MLS disclaims any liability or responsibility for any inaccuracies, errors or omissions in the represented information and all the information contained herein is subject to errors, omissions, price changes, prior sale or withdrawal, without notice and is at all times subject to verification by the purchaser.

Type Land	Status Current	MLS# 414124	Listing Type Beach / Hotel / Tourism
---------------------	--------------------------	-----------------------	--

Key Details

Width 3,250	Depth 717
Acreage 34.00	View Beach Front

Additional Feature

Zoning Hotel/Tourism	Covenants No	Approx. Water Frontag 3250	Road Frontage 2430
Soil Sand			