



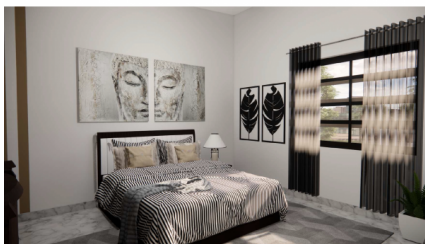
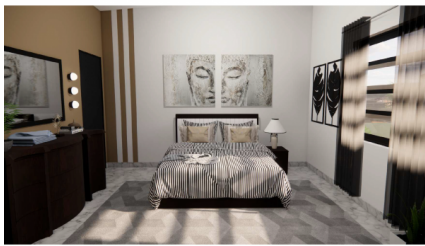
256 Crighton Building, Crewe Rd, PO BOX 1977,
Grand Cayman, KY1-1104, Cayman Islands
Phone: +1 (345) 949-7099
Fax: +1 (345) 949-6819
Email: info@cireba.com

Noble Park Townhome #2 - West Bay

West Bay, Grand Cayman

MLS# 416064

CI\$400,000





JULIET OSBOURNE
juliet@julietosbourne.com



BRIAN WIGHT
345-949-5422
betprops@candw.ky

Step into the charm of this beautiful 2-bedroom, 2.5-bathroom townhome nestled in the sought-after community of West Bay. This home presents an unbeatable location directly across from Noble Recreational Park, setting the stage for a lifestyle filled with leisure and convenience.

Inside, discover a well-designed layout that offers an excellent blend of shared and private spaces. The spacious living room features an open concept that fosters a seamless flow into the dining area and kitchen, perfect for casual meals or entertaining guests.

The kitchen itself is a cooks dream, with ample counter space and storage, allowing for easy meal preparation and organization. The well-sized bedrooms each come with their own dedicated bathrooms, providing the perfect sanctuary for rest and relaxation. An additional half-bath ensures convenience for both residents and guests.

With easy commuting options to George Town and close proximity to beautiful beaches, youll find work-life balance effortlessly.

Plus, living in West Bay offers a plethora of fun amenities. From the Turtle Center and restaurants to recreational centers and outdoor parks, theres always something to enjoy. This townhomes prime location ensures youre never far from the action, yet distant enough to enjoy peace and quiet.

Dont miss out on this opportunity to own a slice of the West Bay lifestyle. Whether youre a first-time homebuyer, a professional looking for an easy commute, or someone searching for a serene place to retire, this spacious and well-built townhome offers a matchless mix of comfort, convenience, and community. Make it your own.

Essential Information

Type	Status	MLS#	Listing Type
Residential	Pen/Con	416064	Condominiums

Key Details

Bed	Bath
2	2.5

View
Garden View

The information contained herein has been furnished by the owner and or their nominee and represented by them to be accurate. The listing company, agent and CIREBA MLS disclaims any liability or responsibility for any inaccuracies, errors or omissions in the represented information and all the information contained herein is subject to errors, omissions, price changes, prior sale or withdrawal, without notice and is at all times subject to verification by the purchaser.

Year Built
2023

Sq.Ft.
1,350

Pets Allowed:
Yes

Additional Feature

Den
No

Floor Level
1

Furnished
No