



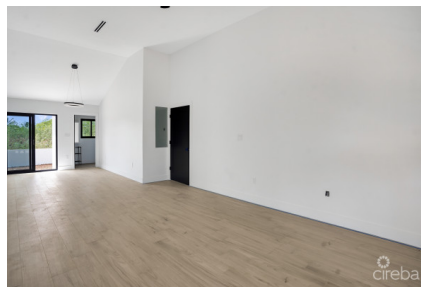
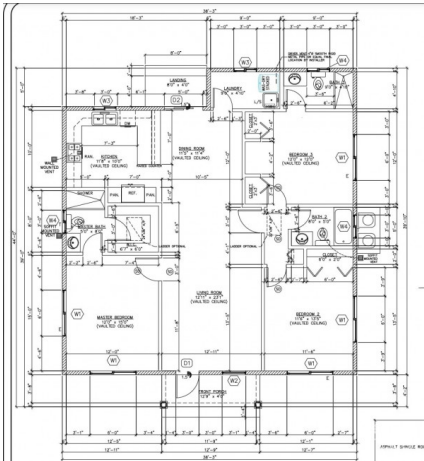
256 Crighton Building, Crewe Rd, PO BOX 1977,
Grand Cayman, KY1-1104, Cayman Islands
Phone: +1 (345) 949-7099
Fax: +1 (345) 949-6819
Email: info@cireba.com

Saddlewood P2

Savannah / Lower Valley, Grand Cayman

MLS# 416301

CI\$580,000



RAFFAELE DELLOGLIO

raffaele.delloglio@sothebysrealty.ky

This beautiful pre construction house, is the perfect home for a growing family or young executives.

It is located only few minutes away from The Village in Savannah and the Bypass.

The house has a modern look , bright and airy with high ceiling, and offers an open lay out, 3b 3b, large kitchen, quartz counters tops, electric stove, Washer and Dryer, Dish washer, Microwave, good storage, split AC, large patio, fenced all around, commercial grade hurricane windows and doors. The CO on the house, is now received. Move in ready. Do not waste time, call now for an appointment.

Essential Information

Type	Status	MLS#	Listing Type
Residential	Current	416301	Single Family Home

Key Details

Bed	Bath
3	3
View	
Garden View	
Year Built	Sq.Ft.
2023	1,535

Additional Feature

Den	Pool	Foundation	Stories
No	No	Slab	1
Furnished	Garage		
No	No		