



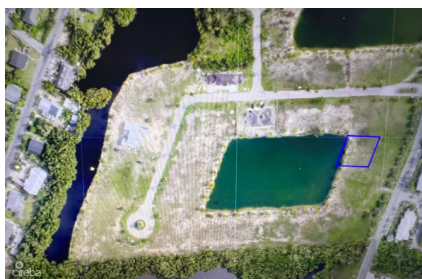
256 Crighton Building, Crewe Rd, PO BOX 1977,
Grand Cayman, KY1-1104, Cayman Islands
Phone: +1 (345) 949-7099
Fax: +1 (345) 949-6819
Email: info@cireba.com

Lakefront Land - Pretigious Community Of The Lakes At Pointdexter

Prospect/Spotts, Grand Cayman

MLS# 416456

CI\$299,000





HILARY MCKENZIE-CAHILL
hilary@williams2realestate.com

Introducing a remarkable opportunity in the prestigious community of the Lakes at Pointdexter. Nestled within this sought-after, well-planned neighborhood, a pristine piece of land spanning 0.2308 acres awaits your vision and aspirations. As you step on to this enticing property, youre greeted by the allure of a flat and cleared expanse, offering endless possibilities for your future. Bordering a lake, this parcel of land boasts a prime location thats nothing short of captivating. Adding to its allure is the adjacency to a dedicated green area, ensuring uninterrupted views of the serene lake waters and breathtaking sunsets that paint the skies. Whether youre envisioning crafting your dream home from the ground up, a haven tailored to your preferences and desires, or youre looking to secure an investment for future appreciation, this parcel is the epitome of opportunity. The canvas is blank, ready for you to create a masterpiece that aligns with your vision and lifestyle.

Residents of the Lakes at Pointdexter revel in the privileges of a well-established community where elegant family homes stand as a testament to tasteful living. Beyond the boundaries of this enclave, convenience is at your fingertips. A short distance away lies the vibrant heart of Grand Harbour, where a medley of amenities caters to your every need. From the essentials at Hurleys Supermarkets to indulgent culinary experiences in fine restaurants, from maintaining your well-being in the gym, yoga, and spinning studio to savoring delectable treats at the bakery and gelato store, this locale ensures a lifestyle brimming with comfort and sophistication. Moreover, banks and gas stations nearby add to the ease of daily life.

In the Lakes at Pointdexter, this 0.2308-acre piece of land isnt just a property; its an embodiment of opportunity, luxury, and the promise of a life well-lived. Seize the moment to shape your aspirations into reality within this prestigious community that beckons you to create your own haven.

Essential Information

Type	Status	MLS#	Listing Type
Land	Current	416456	Low Density Residential

Key Details

Width	Depth
107	98
Acreage	View
0.23	Lake View

The information contained herein has been furnished by the owner and or their nominee and represented by them to be accurate. The listing company, agent and CIREBA MLS disclaims any liability or responsibility for any inaccuracies, errors or omissions in the represented information and all the information contained herein is subject to errors, omissions, price changes, prior sale or withdrawal, without notice and is at all times subject to verification by the purchaser.