



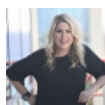
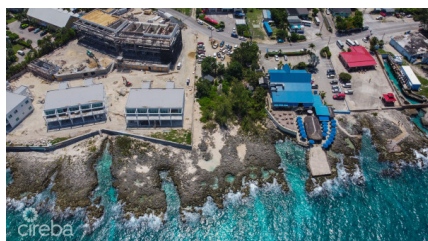
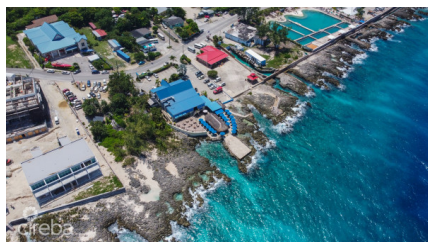
256 Crighton Building, Crewe Rd, PO BOX 1977,
Grand Cayman, KY1-1104, Cayman Islands
Phone: +1 (345) 949-7099
Fax: +1 (345) 949-6819
Email: info@cireba.com

Waterfront Development Opportunity

West Bay, Grand Cayman

MLS# 416594

US\$2,850,000



SLOANE RHULEN
sloane@rhulens.com

Rare opportunity to purchase a commercial development site on the waterfront on North West Point Road. This .83 acre ocean front site is nestled between Cracked Conch and Sunset Point. The site includes approximately 116 linear feet of Sea frontage with a maximum depth of approximately 393 linear feet. The future building pads lie at approximately 7 to 20 feet above mean sea level. Zoned Neighborhood Commercial, the plot allows for mixed use development in one West Bays most up and coming areas.

Essential Information

Type
Land

Status
Current

MLS#
416594

Listing Type
Commercial

Key Details

The information contained herein has been furnished by the owner and or their nominee and represented by them to be accurate. The listing company, agent and CIREBA MLS disclaims any liability or responsibility for any inaccuracies, errors or omissions in the represented information and all the information contained herein is subject to errors, omissions, price changes, prior sale or withdrawal, without notice and is at all times subject to verification by the purchaser.

Width 116	Depth 393
Acreage 0.83	View Ocean Front

Additional Feature

Zoning Commercial	Covenants No	Approx. Water Frontag 116
Neighbourhood		