



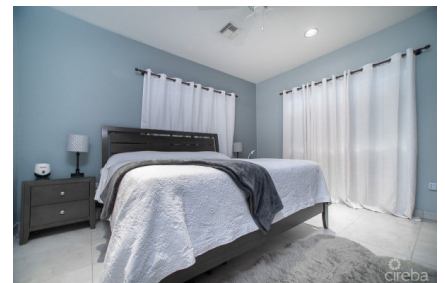
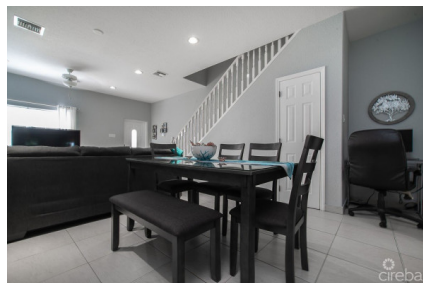
256 Crighton Building, Crewe Rd, PO BOX 1977,
Grand Cayman, KY1-1104, Cayman Islands
Phone: +1 (345) 949-7099
Fax: +1 (345) 949-6819
Email: info@cireba.com

Sheriefes Garden 3 Bedroom End Unit

South Sound, Grand Cayman

MLS# 416687

CI\$745,000





GEMMA HAYLOCK

gemma@williams2realestate.com

Nestled in the heart of South Sound, "Sheriefes Garden" is a meticulously managed gated community that articulates serene living while boasting proximity to the pulse of George Town, the capital of the Cayman Islands. This effortless tranquility of a secluded residence with the convenience of urban living, making it an unparalleled choice for both families and investors.

Picture this: A mere five-minute journey lands you at the picturesque South Sound Beach, Smith Cove while a concise ten minutes leads you to a world of bustling shops and exquisite restaurants and nightlife, guaranteeing the perfect blend of relaxation and recreation at your fingertips. The biggest bonus for a lot of families in Cayman is the proximity to the schools of this fantastic complex. Minutes to Caymans business district for a quick and easy daily commute.

The property we spotlight today is an incredible 3-bedroom end townhouse, gracefully nestled in a private position within Sheriefes Garden, exuding elegance and offering an abundance of natural light across all rooms. A harmonious floor plan welcomes one bedroom and bathroom downstairs, while the upper floor unfolds to reveal two additional bedrooms, each boasting their en-suite bathroom, ensuring space and privacy for all members of the household.

The back patio, complemented by a BBQ and entertaining space and well as use of the pool and communal cabana area. Every detail towards this residence is turnkey, promising a smooth transition into your new home or investment venture.

Potential homeowners will revel in the thoughtfully designed spaces, while investors will find a remarkable opportunity in this fantastic property, as it promises to be an incredible return, courtesy of its strategic location and perfect design. Moreover, the maintenance fees are very reasonable, further enhancing its allure as either a wonderful family home or a lucrative investment property.

Do not miss out on this opportunity, Call today to book a private showing at Sheriefes Garden.

Essential Information

Type
Residential

Status
Current

MLS#
416687

Listing Type
Condominiums

Key Details

The information contained herein has been furnished by the owner and or their nominee and represented by them to be accurate. The listing company, agent and CIREBA MLS disclaims any liability or responsibility for any inaccuracies, errors or omissions in the represented information and all the information contained herein is subject to errors, omissions, price changes, prior sale or withdrawal, without notice and is at all times subject to verification by the purchaser.

Bed
3

Bath
3

View
Garden View

Year Built
2007

Sq.Ft.
1,683

Pets Allowed:
Yes

Additional Feature

Den
No

Floor Level
2

Furnished
Yes

Property Feature

Yes
Fenced Yard

Yes
Pool