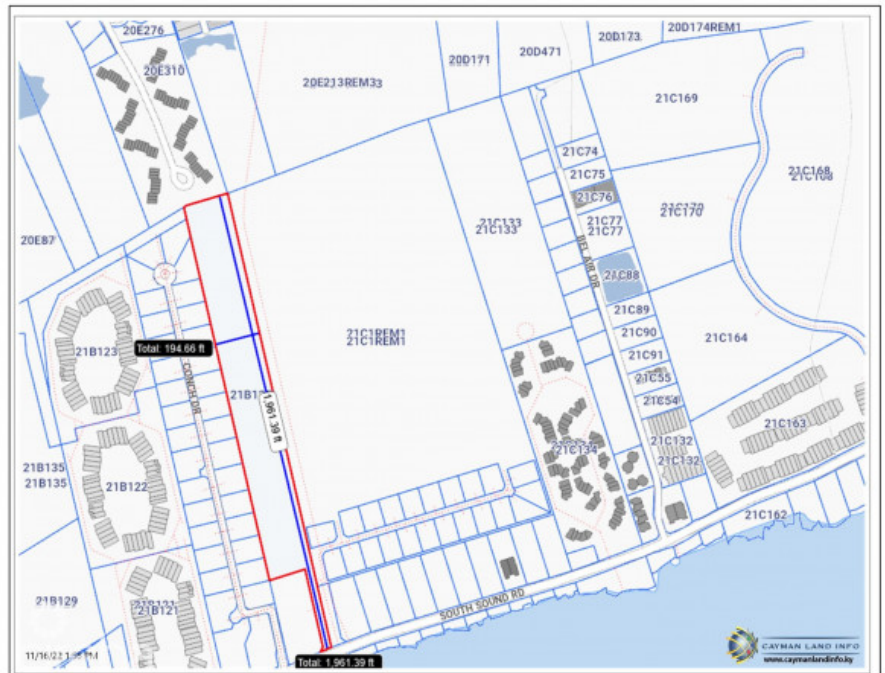


CI\$6,500,000



RENE HISLOP
345-949-7677
rene@rainbow.ky

Largest Development Site currently available in South Sound.
Can be used for single family house lots or apartments.

Type	Status	MLS#	Listing Type
Land	Current	415276	Low Density Residential

The information contained herein has been furnished by the owner and or their nominee and represented by them to be accurate. The listing company, agent and CIREBA MLS disclaims any liability or responsibility for any inaccuracies, errors or omissions in the represented information and all the information contained herein is subject to errors, omissions, price changes, prior sale or withdrawal, without notice and is at all times subject to verification by the purchaser.

Width
195

Depth
1,950

Acreage
7.51

View
Inland