



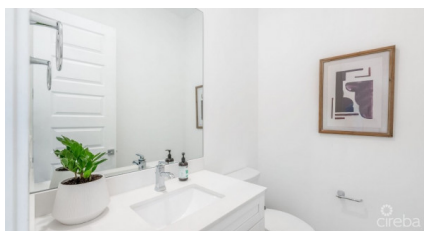
256 Crighton Building, Crewe Rd, PO BOX 1977,  
Grand Cayman, KY1-1104, Cayman Islands  
Phone: +1 (345) 949-7099  
Fax: +1 (345) 949-6819  
Email: info@cireba.com

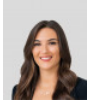
## 7 Mile Corridor Townhome - Eleven Parc #1

Seven Mile Corridor, Grand Cayman

MLS# 416879

**CI\$998,000**





**BIANCA ALBERGA**  
345-233-5224  
bianca.alberga@remax.ky

SUPERB LOCATION in the heart of the 7 Mile Corridor, the exclusive complex of Eleven Parc. This perfectly situated corner unit townhome offers an expansive 2,100 square feet of modern living space. Upon entering the home, you will discover lofty 10 foot ceilings that encompass the entire open concept living space. The kitchen finishes include quartz countertops, stainless steel appliances, a large waterfall island, and ample storage space.

The design is simple and contemporary as each space flows seamlessly into the next. This 3-bedroom, 2.5 bathroom unit has been tastefully decorated with pieces from Anna Hislop Home and is completely move-in ready! This end unit boasts a ton of natural light and privacy is ideal for a family complete with a personal garage and private back porch, perfect for early morning coffees, and evening BBQs.

Eleven Parc consists of only 17 luxury townhouses. Owners get to enjoy the complex's private pool and have easy access to the world famous 7 Mile Beach located just across the street. Corridor living has its peaks, all within walking distance you will find shopping, entertainment, grocery stores and restaurants. Additional features include hurricane rated impact windows and doors, and contemporary recessed lighting throughout. Will need 48hr notice to show the property.

## Essential Information

Type	Status	MLS#	Listing Type
<b>Residential</b>	<b>Current</b>	<b>416879</b>	<b>Condominiums</b>

## Key Details

Bed	Bath
<b>3</b>	<b>2.5</b>

View  
**Garden View**

Year Built	Sq.Ft.	Pets Allowed:
<b>2019</b>	<b>2,096</b>	<b>Yes</b>

## Additional Feature

Den	Floor Level	Furnished
<b>No</b>	<b>1</b>	<b>Yes</b>

## Property Feature

Yes  
**Fenced Yard**

Yes  
**Pool**