



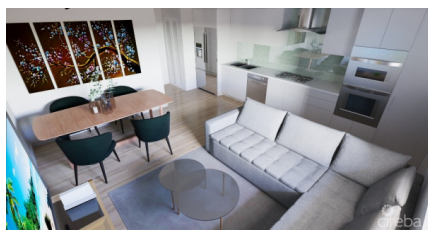
256 Crighton Building, Crewe Rd, PO BOX 1977,
Grand Cayman, KY1-1104, Cayman Islands
Phone: +1 (345) 949-7099
Fax: +1 (345) 949-6819
Email: info@cireba.com

Yarl 1 Bed #10 Phase 2

George Town, Grand Cayman

MLS# 417129

CI\$399,000





MARK GAUS
345-946-9961
mark.gaus@remax.ky

Introducing George Towns newest, multi-phase residential community, YARL! With the incredible demand of Phase 1, we are now launching Phase 2! YARL is filled with amenities including a lovely pool area, pickleball court, gym, clubhouse and kids play area to name a few. This gated community is conveniently located on Linford Pierson Highway next to Downtown Reach. The location is amazing with direct proximity to schools, Grand Harbour, Harbour Reach, supermarkets, George Town Hospital and direct access to Seven Mile Beach Corridor. This neighbourhood will feature 1 bed, 1 bed plus den, 2 bed and 2 bed plus den options - perfect for a primary residence or rental investment.

Built to withstanding all weather as well as being energy efficient these homes are constructed with super strong concrete block, hurricane impact windows and doors as well as a standing seam metal roof. Rest assured knowing the Developer, National Builders, has completed numerous fantastic communities in Cayman over the past couple decades. Estimated completion is Q1 2025. Inquire today for your Information and Sales Brochure!

Essential Information

Type	Status	MLS#	Listing Type
Residential	Current	417129	Condominiums

Key Details

Bed	Bath
1	1

View
Garden View, Pool View

Year Built	Sq.Ft.	Pets Allowed:
2025	646	Yes

Additional Feature

Den	Floor Level	Furnished
No	1	No

Property Feature

Yes	Yes
Fenced Yard	Pool