



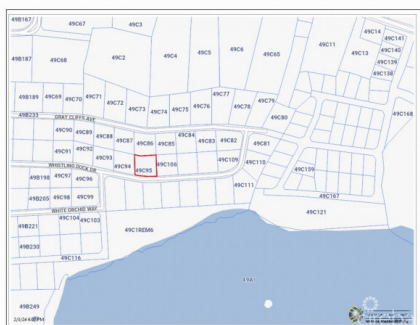
256 Crighton Building, Crewe Rd, PO BOX 1977,
Grand Cayman, KY1-1104, Cayman Islands
Phone: +1 (345) 949-7099
Fax: +1 (345) 949-6819
Email: info@cireba.com

Splendid View Lot, North Side

North Side, Grand Cayman

MLS# 417285

CI\$125,000





RICK BURGOS
345-945-4411
rick@coldwellbankercayman.com

Introducing an exceptional opportunity to build your dream home in the district of North Side, on the stunning island of Grand Cayman. This desirable parcel is situated in a subdivision with elevations ranging between 10 and 16 feet above sea level, ensuring your property remains safe from flooding.

Zoned as Medium Density Residential, this lot offers a multitude of possibilities, allowing for the construction of stand-alone, semi-detached, and duplex properties. The generous size of the lot, measuring 0.2477 acres, provides ample space to create a truly remarkable living space that suits your unique vision.

Located near the renowned Rum Point, youll have access to the islands pristine beaches, crystal-clear waters, and a variety of recreational activities, including snorkeling, diving, and boating. The district of North Side offers a peaceful and tranquil environment, away from the hustle and bustle of everyday life.

Situated approximately 20 miles northeast of George Town, the Cayman Islands capital, youll have the convenience of easy access to a vibrant financial center and a thriving tourism hub. Explore a plethora of dining options, high-end shopping opportunities, and a lively nightlife scene.

With its impressive location and the endless possibilities it presents, this property in North Side is a rare find. Whether youre looking to build your dream home, invest in a rental property, or create a vacation retreat, this parcel offers endless potential. Dont miss out on this unique opportunity to become a part of the idyllic Grand Cayman lifestyle.

Essential Information

Type	Status	MLS#	Listing Type
Land	Current	417285	Low Density Residential

Key Details

Width	Depth
108	100
Acreage	View
0.25	Inland