



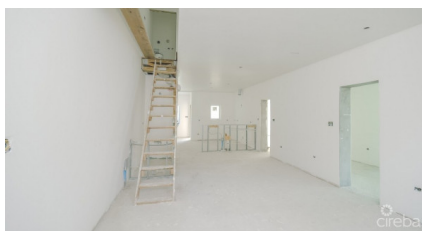
256 Crighton Building, Crewe Rd, PO BOX 1977,
Grand Cayman, KY1-1104, Cayman Islands
Phone: +1 (345) 949-7099
Fax: +1 (345) 949-6819
Email: info@cireba.com

Gloria May Villas #1

Savannah / Lower Valley, Grand Cayman

MLS# 417532

CI\$775,000





MARK GAUS
345-946-9961
mark.gaus@remax.ky

Welcome to Gloria May Villas! This charming boutique community is perfect for your family. An innovative design and floorplan offering 4 bedrooms, three and a half bathrooms and a large relaxing open patio in the garden. This model also provides the option for multi-generational living or renting with additional kitchen and laundry hook ups already plumbed in. Constructed using high end materials with an emphasis on energy efficiency and hurricane protection these homes will be highly sought after. ICF construction has been utilized which is extremely energy efficient and superior in strength when compared to traditional concrete block, it also allows the residences to be very quiet inside. ESW Impact Windows and Doors with low E give a great aesthetic look but are also a popular option for providing the necessary hurricane protection. Other features like Spray Foam Insulation and gas appliances will be greatly appreciated bringing your CUC bills down. Rest assured you will be working with an excellent Developer with a great reputation who has completed popular projects such as Grand Palmyra, South Bay Estates and South Bay Residences to name a few. Spanning 2,000 SQFT with a quiet and peaceful area these homes will be completed in August 2024. Reserve yours today!

Essential Information

Type	Status	MLS#	Listing Type
Residential	Current	417532	Semi-detached / Duplex / Triplex

Key Details

Bed	Bath
4	3.5
View	
Garden View, Inland	
Year Built	Sq.Ft.
2024	2,000

Pets Allowed:
Yes

Additional Feature

Den	Pool
No	No