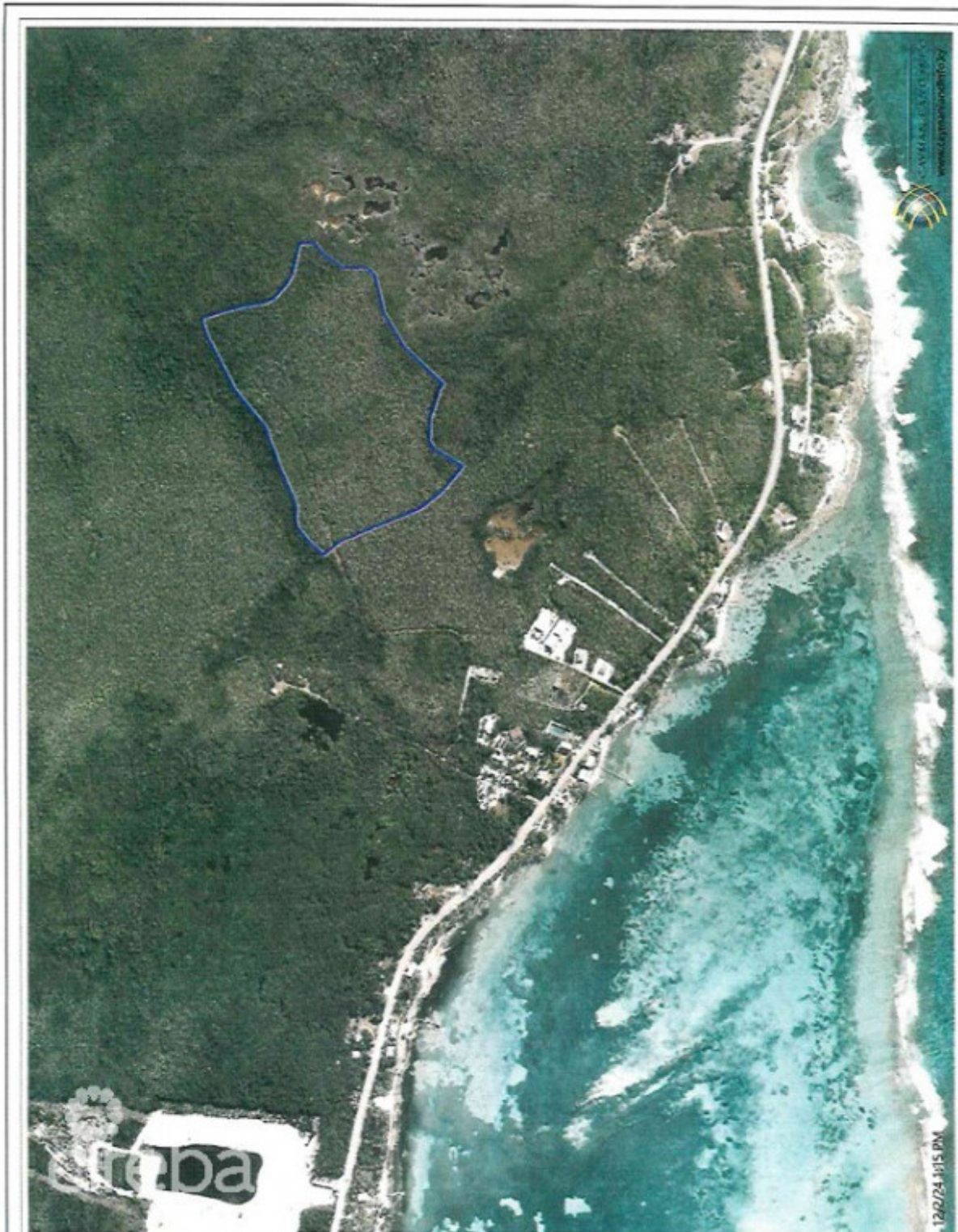


East End Land

East Interior, Grand Cayman

MLS# 418541

CI\$2,900,000



The information contained herein has been furnished by the owner and or their nominee and represented by them to be accurate. The listing company, agent and CIREBA MLS disclaims any liability or responsibility for any inaccuracies, errors or omissions in the represented information and all the information contained herein is subject to errors, omissions, price changes, prior sale or withdrawal, without notice and is at all times subject to verification by the purchaser.



JON-DAVID THOMPSON
jondavid@eracayman.com



PAUL THOMPSON
345 945-6000
paul.thompson@eracayman.com

Explore the endless potential of this expansive 36-acre parcel of pristine land, nestled in the tranquil East Interior. Perfectly positioned for development, this vast property offers a blank canvas for visionary projects such as a private estate, eco-resort, agricultural ventures, or residential subdivision. Features: Prime Location: Situated in a serene area, away from the bustle, yet within reach of essential amenities. Development Potential: Ample space for large-scale projects with significant investment appeal. Natural Beauty: Lush surroundings provide an idyllic backdrop for nature-inspired developments. Accessibility: Convenient road access ensures seamless connectivity. Whether you're an investor seeking a lucrative opportunity or a developer with big dreams, this rare property is ready to bring your vision to life.

Essential Information

Type	Status	MLS#	Listing Type
Land	Current	418541	Low Density Residential

Key Details

Width	Depth
980	1,586
Acresage	View
36.00	Garden View