



256 Crighton Building, Crewe Rd, PO BOX 1977,  
Grand Cayman, KY1-1104, Cayman Islands  
Phone: +1 (345) 949-7099  
Fax: +1 (345) 949-6819  
Email: info@cireba.com

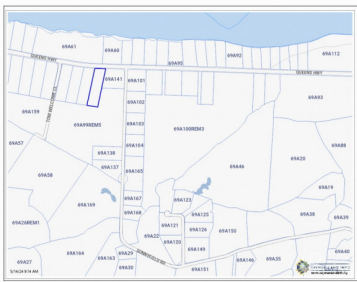
---

## **Queens Highway - Approved Plans & Planning Fees Included - Your French-style Dream Home Awaits!**

North East Coast / Colliers, Grand Cayman

MLS# 417760

**CI\$590,000**



The information contained herein has been furnished by the owner and or their nominee and represented by them to be accurate. The listing company, agent and CIREBA MLS disclaims any liability or responsibility for any inaccuracies, errors or omissions in the represented information and all the information contained herein is subject to errors, omissions, price changes, prior sale or withdrawal, without notice and is at all times subject to verification by the purchaser.



**EJ BODDEN**  
 345 945-4411  
 ej@coldwellbankercayman.com

Discover the perfect blend of elegance, privacy, and breathtaking views with this exceptional listing in the Cayman Islands. Nestled 13-30 feet above sea level, this partially built French-style home offers stunning panoramic ocean views from both levels – a peaceful retreat for anyone seeking to embrace island life. Key Features: • Privacy & Tranquility: Tucked away in a serene location, ideal for a secluded lifestyle. • Approved Plans & Fees Included: Save time and hassle! The house plans and planning fees are already taken care of. • Timeless French-Style Design: An architectural gem waiting for your personal touch. • Elevated Ocean Views: Wake up to mesmerizing sunrises and relax with breathtaking sunsets. Seize the opportunity to complete your dream home in paradise. Whether you’re looking for a permanent residence or a luxury investment, this property offers endless potential. This exceptional property comes with a host of features to enhance your living experience, including a concrete/tiled bench and firepit, a pond/fountain with a glass viewing panel, a vinyl garden shed on a concrete foundation, and a pergola for outdoor relaxation. The in-ground water lily basin adds a touch of tranquility, while the fruit and shade trees provide a natural backdrop for your new sanctuary. Additional amenities include a 40ft container with installed windows and doors, a dog kennel with a mini barn, and temporary panel electricity hookup with outlets throughout the property. The groundwork has been laid with a 6ft tall concrete house foundation INCLUDED FEATURES Construction privacy fence/gates installed (to the front) Approved house plans (French style home) and paid planning fees Approved fence plans and paid planning fees Street Address already assigned Concrete/tiles bench and Firepit Concrete/tiled pond/fountain with glass viewing panel 40ft container on concrete footings (has windows and door installed) Reinforced ready-made vinyl garden shed on concrete foundation 7x10 Pergola In-ground concrete water lily basin Fruit and shade trees Dog kennel with mini barn Temporary panel electricity hookup with outlets installed throughout property Water already throughout property (WAuth) 6 ft. tall concrete house foundation with plumbing and electrical + panel box installed 10 ft. ground floor walls with plumbing, electrical and water drains installed Ample building materials to help finish home (8” blocks, steel etc.)

## Essential Information

Type	Status	MLS#	Listing Type
<b>Residential</b>	<b>Current</b>	<b>417760</b>	<b>Single Family Home</b>

## Key Details

The information contained herein has been furnished by the owner and or their nominee and represented by them to be accurate. The listing company, agent and CIREBA MLS disclaims any liability or responsibility for any inaccuracies, errors or omissions in the represented information and all the information contained herein is subject to errors, omissions, price changes, prior sale or withdrawal, without notice and is at all times subject to verification by the purchaser.

Bed  
**4**

Bath  
**3.5**

View  
**Water View**

Year Built  
**2024**

Sq.Ft.  
**3,700**

## **Additional Feature**

Den  
**No**

Pool  
**No**

Foundation  
**Slab**

Garage  
**2**