



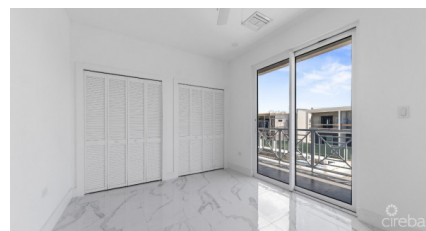
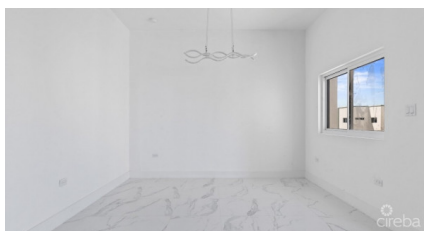
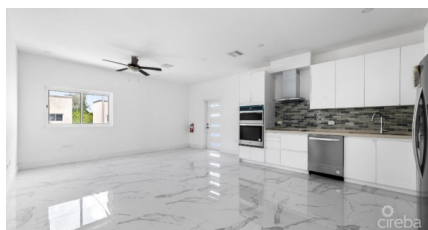
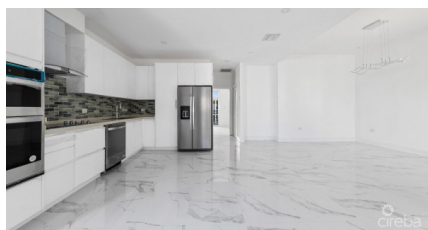
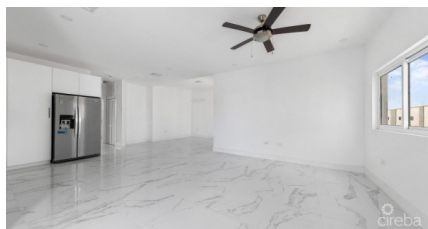
256 Crighton Building, Crewe Rd, PO BOX 1977,
Grand Cayman, KY1-1104, Cayman Islands
Phone: +1 (345) 949-7099
Fax: +1 (345) 949-6819
Email: info@cireba.com

Yarl 2 Bed Condo #28 Phase 2

George Town, Grand Cayman

MLS# 417923

CI\$479,000





MARK GAUS
345-946-9961
mark.gaus@remax.ky

FINAL PHASE 3 TO BE SOLD AT YARL – LAST CHANCE TO BUY AT LOW PRE-CONSTRUCTION PRICES!

Introducing George Town's newest, multi-phase residential community, YARL! With the incredible sales demand of Phases 1 and 2, we are now launching the Final Phase 3! YARL is filled with amenities including a lovely pool area, pickleball court, gym, clubhouse and kids play area to name a few. This gated community is conveniently located on Linford Pierson Highway next to Downtown Reach. The location is amazing with direct proximity to schools, Grand Harbour, Harbour Reach, supermarkets, George Town Hospital and direct access to Seven Mile Beach Corridor. This neighbourhood will feature 1 bed, 1 bed plus den, 2 bed and 2 bed plus den options - perfect for a primary residence or rental investment.

Built to withstanding all weather as well as being energy efficient these homes are constructed with super strong concrete block, hurricane impact windows and doors as well as a standing seam metal roof. Rest assured knowing the Developer, National Builders, has completed numerous fantastic communities in Cayman over the past couple decades. Estimated completion is Q1 2025. Inquire today for your Information and Sales Brochure! Photos of similar unit.

Essential Information

| | | | |
|--------------------|------------------|---------------|---------------------|
| Type | Status | MLS# | Listing Type |
| Residential | Increased | 417923 | Condominiums |

Key Details

| | |
|----------|----------|
| Bed | Bath |
| 2 | 1 |

View
Garden View

| | | |
|-------------|------------|---------------|
| Year Built | Sq.Ft. | Pets Allowed: |
| 2025 | 920 | Yes |

Additional Feature

| | | |
|-----------|-------------|-----------|
| Den | Floor Level | Furnished |
| No | 1 | No |

Property Feature

| | |
|--------------------|-------------|
| Yes | Yes |
| Fenced Yard | Pool |

The information contained herein has been furnished by the owner and or their nominee and represented by them to be accurate. The listing company, agent and CIREBA MLS disclaims any liability or responsibility for any inaccuracies, errors or omissions in the represented information and all the information contained herein is subject to errors, omissions, price changes, prior sale or withdrawal, without notice and is at all times subject to verification by the purchaser.