



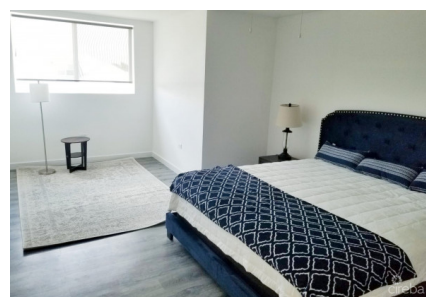
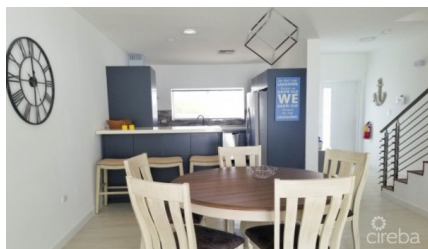
256 Crighton Building, Crewe Rd, PO BOX 1977,  
Grand Cayman, KY1-1104, Cayman Islands  
Phone: +1 (345) 949-7099  
Fax: +1 (345) 949-6819  
Email: info@cireba.com

## Royal Pines Spacious Townhouse Style Condo

George Town, Grand Cayman

MLS# 419618

**CI\$629,000**





**LIVIA KWONG**

livia@1503propertygroup.com

Step into this thoughtfully designed 3bed/3.5bath townhome with a versatile den, located in a well maintained complex only minutes from George Town, schools, supermarkets and Grand Harbour/Harbour Walk. This spacious residence offers a perfect blend of functionality and comfort across three levels, ideal for families or professionals seeking convenience and style. The ground floor welcomes you through a charming mini foyer into an open-concept living space that includes a full size modern kitchen with a breakfast bar, a dedicated dining area and a cozy living room. Sliding patio doors lead to a private back garden, perfect for relaxing or entertaining. A convenient half bathroom is also located on this level, along with two dedicated parking spaces directly in front of the unit and visitor parking just steps away. Upstairs on the second floor, you'll find two generously sized bedrooms, each with its own full bathroom, offering privacy and comfort for family members or guests. The laundry closet with a full-size washer and dryer is also located on this floor, along with a tankless water heater for energy efficiency. The third floor is a private retreat featuring the primary bedroom with two spacious closets, one of which is a walk-through leading to a full size bathroom and a cozy den tucked within the bedroom itself. On the same floor, there is a separate private den just down the hallway that offers flexible use as a home office, nursery, extra bedroom, or storage space, depending on your needs. Residents enjoy access to a communal gated pool, gym, and clubhouse just steps from the home, creating a resort-style atmosphere in a peaceful, secure setting. This property combines modern living with practical amenities in a prime location, making it an exceptional opportunity for homeowners and investors alike.

## Essential Information

Type	Status	MLS#	Listing Type
<b>Residential</b>	<b>New</b>	<b>419618</b>	<b>Condominiums</b>

## Key Details

Bed	Bath
<b>3</b>	<b>3.5</b>

View  
**Garden View, Inland**

Year Built	Sq.Ft.	Pets Allowed:
<b>2020</b>	<b>2,100</b>	<b>Yes</b>

## Additional Feature

The information contained herein has been furnished by the owner and or their nominee and represented by them to be accurate. The listing company, agent and CIREBA MLS disclaims any liability or responsibility for any inaccuracies, errors or omissions in the represented information and all the information contained herein is subject to errors, omissions, price changes, prior sale or withdrawal, without notice and is at all times subject to verification by the purchaser.

Den  
**Yes**

Floor Level  
**1**

Furnished  
**Yes**