



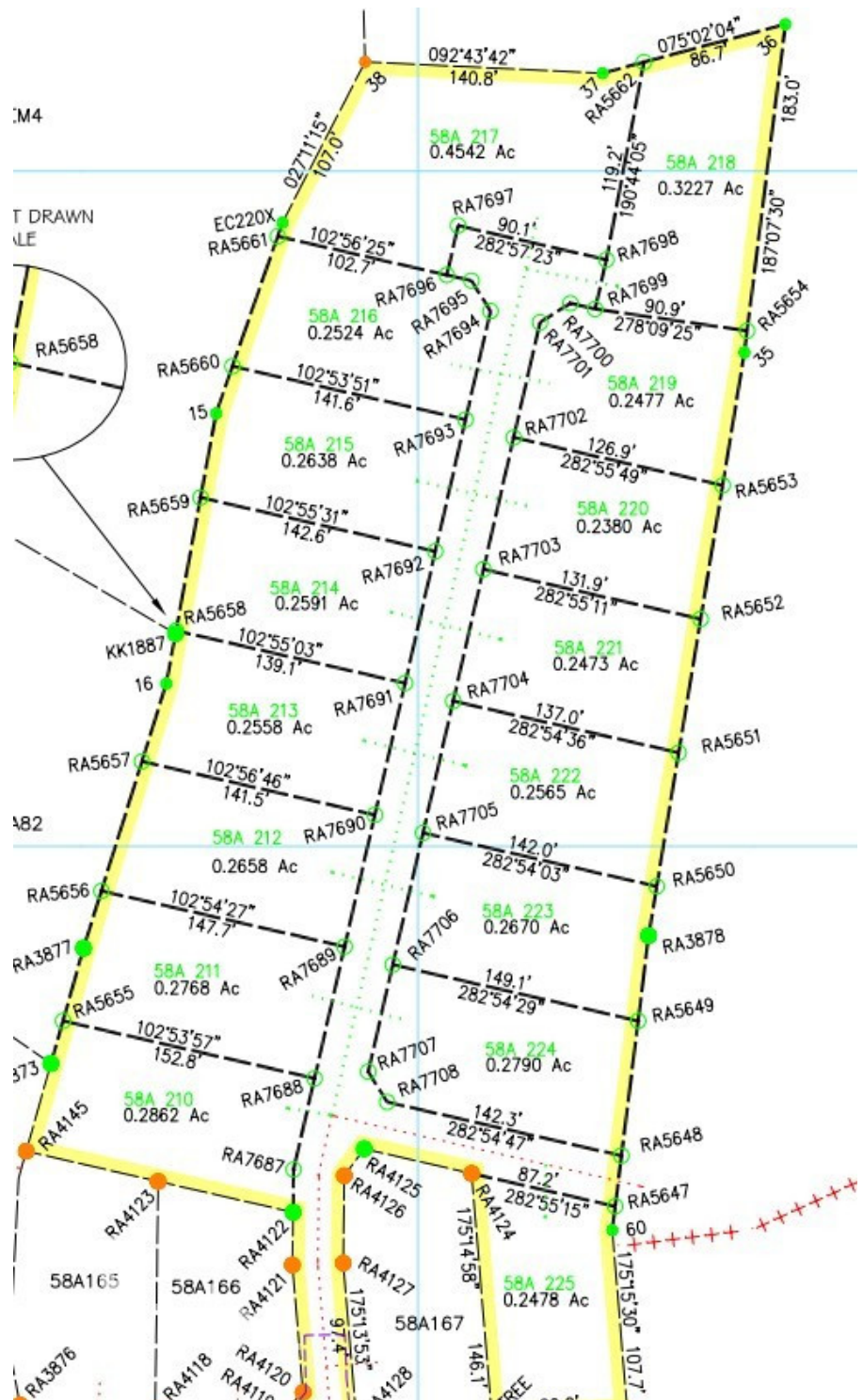
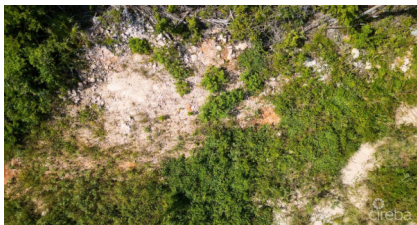
256 Crighton Building, Crewe Rd, PO BOX 1977,  
Grand Cayman, KY1-1104, Cayman Islands  
Phone: +1 (345) 949-7099  
Fax: +1 (345) 949-6819  
Email: info@cireba.com

## Copper Ridge - Lot #4 - Phase 2

Midland East, Grand Cayman

MLS# 418577

**CI\$145,000**



The information contained herein has been furnished by the owner and or their nominee and represented by them to be accurate. The listing company, agent and CIREBA MLS disclaims any liability or responsibility for any inaccuracies, errors or omissions in the represented information and all the information contained herein is subject to errors, omissions, price changes, prior sale or withdrawal, without notice and is at all times subject to verification by the purchaser.



**COLBY SEYMOUR**  
colby.seymour@remax.ky

Discover a rare opportunity to own a beautiful parcel of land in the ever-expanding community of Frank Sound.



**NICHOLAS DIBB**  
345-233-3000  
nick.dibb@remax.ky

Embrace the potential of this spacious lot, offering ample room for your vision to come to life. With its prime location located at the start of Phase 2, Lot #4 is an ideal canvas for your future endeavors, embracing a sense of seclusion, while being 10 minutes away from Rum Point, Kaibo, etc. Copper Ridge is the ideal development to help create your dream home or investment project!  
\*Limited Availability Left\*

## Essential Information

Type	Status	MLS#	Listing Type
<b>Land</b>	<b>Current</b>	<b>418577</b>	<b>Low Density Residential</b>

## Key Details

Width	Depth
<b>80</b>	<b>151</b>
Acreage	View
<b>0.28</b>	<b>Inland</b>