



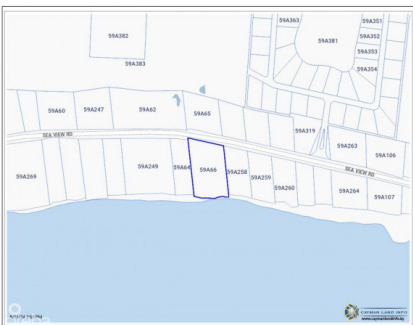
256 Crighton Building, Crewe Rd, PO BOX 1977,  
Grand Cayman, KY1-1104, Cayman Islands  
Phone: +1 (345) 949-7099  
Fax: +1 (345) 949-6819  
Email: info@cireba.com

## Exclusive Beachfront Estate Parcel On Frank Sound 200 Ft Of Pristine Beachfront!

Midland East, Grand Cayman

MLS# 418325

**CI\$1,850,000**



### QUATRO HATCH

quatro@1503propertygroup.com



### ANTONY MCMAIN

antony@1503propertygroup.com

This expansive beachfront estate parcel on Frank Sound offers 200 ft of stunning shoreline with a generous 300 ft depth extending to the main road. Whether you envision a luxurious estate home or a 30-bedroom condo complex, this prime piece of land provides ample space for development, while ensuring complete privacy. Utilities, including city water and electricity, are readily accessible from the main road, making the building process smooth and convenient. Located in a tranquil and environmentally protected area, this parcel offers incredible snorkelling right at your doorstep, surrounded by the unspoiled beauty of Frank Sound. Perfect for those seeking peace, privacy, and a unique development opportunity off the beaten path.

## Essential Information

The information contained herein has been furnished by the owner and or their nominee and represented by them to be accurate. The listing company, agent and CIREBA MLS disclaims any liability or responsibility for any inaccuracies, errors or omissions in the represented information and all the information contained herein is subject to errors, omissions, price changes, prior sale or withdrawal, without notice and is at all times subject to verification by the purchaser.

Type  
**Land**

Status  
**Current**

MLS#  
**418325**

Listing Type  
**Low Density  
Residential**

## Key Details

Width  
**200**

Depth  
**300**

Acreage  
**1.25**

View  
**Beach Front**