



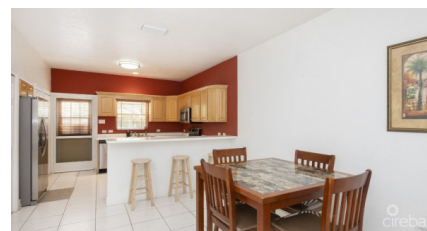
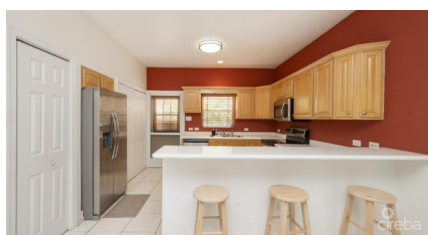
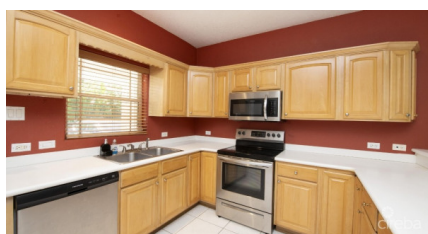
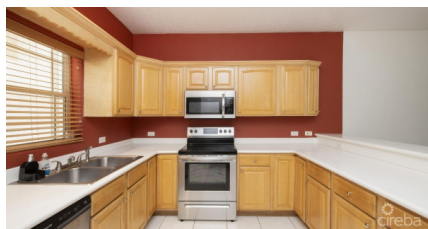
256 Crighton Building, Crewe Rd, PO BOX 1977,  
Grand Cayman, KY1-1104, Cayman Islands  
Phone: +1 (345) 949-7099  
Fax: +1 (345) 949-6819  
Email: info@cireba.com

## Willow Pointe - Spacious 2 Bed

Prospect/Spotts, Grand Cayman

MLS# 418462

**CI\$485,000**



**JACQUELINE ZIEMNIAK**

[jacqueline.ziemniak@remax.ky](mailto:jacqueline.ziemniak@remax.ky)

Welcome to this delightful 2-bedroom, 2.5-bathroom townhouse offering 1,484 sq ft of well-designed living space. This inviting home features an open floor plan with spacious living and dining areas, perfect for entertaining or relaxing in comfort. The kitchen offers stainless steel appliances, ample storage and counter space, flowing seamlessly into the living areas.

Both bedrooms are generously sized and include en-suite bathrooms, with an additional half bath on the main level for convenience. Enjoy serene pool views from your private balcony, creating an ideal spot for morning coffee or evening relaxation. With low strata fees, this property combines affordability with the convenience of a low-maintenance lifestyle.

Conveniently located just minutes from the popular Spotts Beach, Countryside Shopping Village, local schools, gyms, and more, this townhouse offers unparalleled accessibility to essential amenities and leisure spots.

Don't miss the opportunity to make this charming townhouse your new home!

## Essential Information

|                            |                          |                       |                                     |
|----------------------------|--------------------------|-----------------------|-------------------------------------|
| Type<br><b>Residential</b> | Status<br><b>Current</b> | MLS#<br><b>418462</b> | Listing Type<br><b>Condominiums</b> |
|----------------------------|--------------------------|-----------------------|-------------------------------------|

## Key Details

|                 |                    |
|-----------------|--------------------|
| Bed<br><b>2</b> | Bath<br><b>2.5</b> |
|-----------------|--------------------|

View  
**Garden View, Pool View**

|                           |                        |                             |
|---------------------------|------------------------|-----------------------------|
| Year Built<br><b>2006</b> | Sq.Ft.<br><b>1,484</b> | Pets Allowed:<br><b>Yes</b> |
|---------------------------|------------------------|-----------------------------|

## Additional Feature

|                  |                         |                         |
|------------------|-------------------------|-------------------------|
| Den<br><b>No</b> | Floor Level<br><b>2</b> | Furnished<br><b>Yes</b> |
|------------------|-------------------------|-------------------------|