



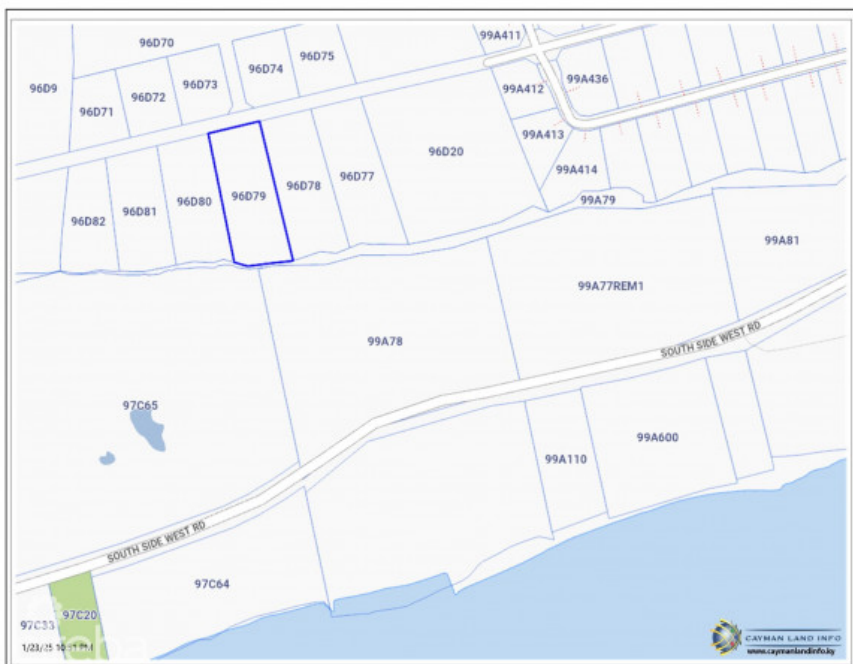
256 Crighton Building, Crewe Rd, PO BOX 1977,
Grand Cayman, KY1-1104, Cayman Islands
Phone: +1 (345) 949-7099
Fax: +1 (345) 949-6819
Email: info@cireba.com

Brac Bluff Edge .82 Acre

Cayman Brac West, Cayman Brac

MLS# 418703

CI\$165,000



PHILLIP WOOD

345-623-1400

phillip.wood@evrealestate.com

Claim Your Slice of Paradise on Cayman Brac. Elevated 40 feet above sea level, this prime Bluff Edge sea view land offers unmatched safety, stunning vistas, and endless potential. Build your dream home or invest in a rapidly rising market on peaceful, tranquil Cayman Brac. Key Features: Prime Bluff location with breathtaking views. Minutes from the airport, restaurants, shopping, and grocery stores. Neighboring lots available for expanded opportunities. Experience Cayman Brac's Natural Beauty: Bird Watching: Home to rare species like the Booby Bird. The Caves: Fascinating geological wonders. Rock Climbing: Thrills for adventure seekers. Peaceful island living at its finest. With land values climbing, this is your chance to own prime real estate in the Caribbean. Don't wait—secure your piece of Cayman Brac today!

Essential Information

The information contained herein has been furnished by the owner and or their nominee and represented by them to be accurate. The listing company, agent and CIREBA MLS disclaims any liability or responsibility for any inaccuracies, errors or omissions in the represented information and all the information contained herein is subject to errors, omissions, price changes, prior sale or withdrawal, without notice and is at all times subject to verification by the purchaser.

Type	Status	MLS#	Listing Type
Land	Current	418703	Little Cayman / Cayman Brac

Key Details

Width	Depth
127	296
Acreage	View
0.82	Water View