



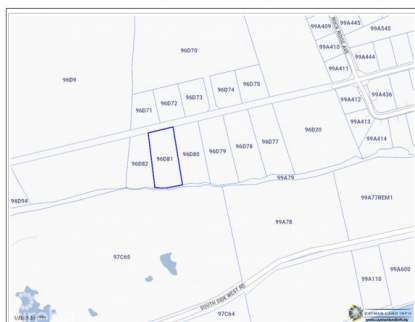
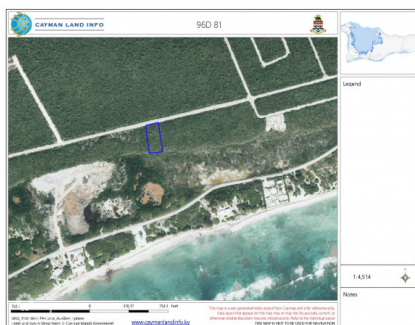
256 Crighton Building, Crewe Rd, PO BOX 1977,  
Grand Cayman, KY1-1104, Cayman Islands  
Phone: +1 (345) 949-7099  
Fax: +1 (345) 949-6819  
Email: [info@cireba.com](mailto:info@cireba.com)

## Brac Bluff Edge Land .70 Acre

Cayman Brac West, Cayman Brac

MLS# 418718

**CI\$150,000**





**PHILLIP WOOD**  
345-623-1400  
phillip.wood@evrealestate.com

Discover the opportunity to own a piece of paradise on the scenic Bluff Edge of Cayman Brac! This ocean view, high-and-dry parcel offers the perfect location to build your dream home or to land bank for future appreciation, as land values on Cayman Brac continue to soar. Situated just across the street from the inland Bluff lots currently on the market, this property boasts a strategic location that offers privacy and stunning natural surroundings. Adjoining lots are also available for sale, making it an excellent choice for those seeking additional space or investment potential. Convenience meets serenity here, with the property located just minutes from the Charles Kirkconnell International Airport, restaurants, shopping, grocery stores, and Cayman Brac’s top attractions. Enjoy outdoor adventures like rock climbing, exploring the famous Bluff Caves, and birdwatching, where you may spot the endangered Booby Bird and the vibrant Cayman Brac Parrot. For water enthusiasts, the island is renowned for world-class fishing and scuba diving, offering breathtaking underwater experiences. Don’t miss this chance to invest in the future while enjoying the natural beauty and tranquility of Cayman Brac. Contact us today to secure this incredible piece of property and start turning your dream into a reality!

Essential Information

Type	Status	MLS#	Listing Type
Land	Current	418718	Little Cayman / Cayman Brac

Key Details

Width	Depth
127	250
Acreage	View
0.70	Water View, Ocean View