



256 Crighton Building, Crewe Rd, PO BOX 1977,  
Grand Cayman, KY1-1104, Cayman Islands  
Phone: +1 (345) 949-7099  
Fax: +1 (345) 949-6819  
Email: [info@cireba.com](mailto:info@cireba.com)

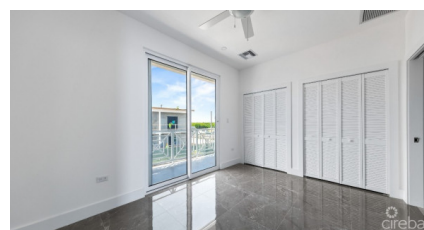
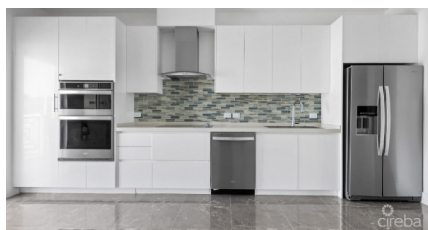
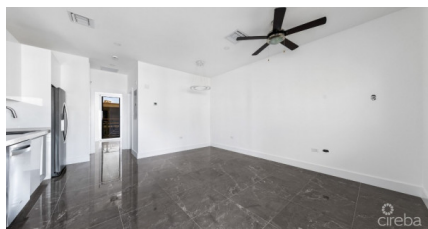
---

## Investor Special - Yarl (3) 1 Bed, 1 Bath (646 Sqft) Units

George Town, Grand Cayman

MLS# 418822

**CI\$999,990**





**MARK GAUS**  
345-946-9961  
mark.gaus@remax.ky

## INCREDIBLE INVESTOR SPECIAL - PERFECT FOR ROI AND CAPITAL APPRECAITION

Offering three brand new 1 bed, 1 bath (646 SQFT) units. These rent for CI\$2,600 per month each plus utilities. These units sell for CI\$399,000 individually. The strata is very low at CI\$375 per month which includes insurance. Expected CO (Certificate of Occupancy) is May 2025. Units 95, 98 and 103 are included in the sale.

Introducing George Town's newest, multi-phase residential community, YARL! YARL is filled with amenities including a lovely pool area, pickleball court, gym, clubhouse and kids play area to name a few. This gated community is conveniently located on Linford Pierson Highway next to Downtown Reach. The location is amazing with direct proximity to schools, Grand Harbour, Harbour Reach, supermarkets, George Town Hospital and direct access to Seven Mile Beach Corridor. This neighbourhood will feature 1 bed, 1 bed plus den, 2 bed and 2 bed plus den options - perfect for a primary residence or rental investment.

Built to withstand all weather as well as being energy efficient these homes are constructed with super strong concrete block, hurricane impact windows and doors as well as a standing seam metal roof. Rest assured knowing the Developer, National Builders, has completed numerous fantastic communities in Cayman over the past couple decades. Inquire today for your Information and Sales Brochure!

Photos of similar unit.

## Essential Information

Type	Status	MLS#	Listing Type
<b>Residential</b>	<b>Current</b>	<b>418822</b>	<b>Condominiums</b>

## Key Details

Bed	Bath
<b>1</b>	<b>1</b>

View  
**Garden View**

Year Built	Sq.Ft.	Pets Allowed:
<b>2025</b>	<b>646</b>	<b>Yes</b>

## Additional Feature

Den	Floor Level	Furnished
<b>No</b>	<b>1</b>	<b>No</b>

Property Feature

Yes

Fenced Yard

Yes

Pool