



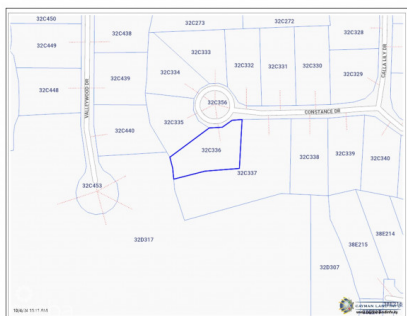
256 Crighton Building, Crewe Rd, PO BOX 1977,
Grand Cayman, KY1-1104, Cayman Islands
Phone: +1 (345) 949-7099
Fax: +1 (345) 949-6819
Email: info@cireba.com

Valley Gardens Land, High Elevation

Savannah / Lower Valley, Grand Cayman

MLS# 418978

CI\$245,000





GEORGE DAVIDSON
345 623-9999
george@williams2realestate.com

Valley Gardens House Lot – Quiet and Private Your future home starts here. This Valley Gardens House Lot, located in Lower Valley and part of a lovely well-established subdivision, is an exceptional opportunity to create your dream home in one of the most private and serene locations available. Nestled at the end of a cul-de-sac, this well-elevated property offers you unmatched privacy and the tranquility you’ve been seeking. Prime Location in Lower Valley Positioned in a quiet subdivision just minutes from Country Side Shopping Center, this lot gives you the convenience of easy access to nearby amenities while maintaining the peaceful ambiance that defines Lower Valley. Whether you’re heading out for groceries, schools, or a leisurely day out, everything you need is within a short drive from this idyllic location. A Private Oasis This property sits at the end of a private cul-de-sac, providing not only peace and seclusion but also the safety and comfort that come with a quiet neighborhood setting. You’ll be able to enjoy the beauty of nature, with no through traffic, offering the perfect space for those who value privacy. Perfect for Land Banking or Future Development For those looking for an ideal investment opportunity, the Valley Gardens House Lot is an excellent choice to land bank. With its prime location, privacy, and elevated position which is approx 20 feet above sea level, this property is poised for potential growth in value over the years, making it a smart, future-focused purchase. Why This Property Stands Out This property is uniquely positioned in a peaceful Cul-de-sac for those who value both privacy and accessibility. Whether you’re a property buyer looking to build a residence or an investor looking to secure land in a sought-after area while it grows in value, Valley Gardens offers the perfect blend of both worlds. How do you want to live your life? Photos courtesy of Cayman Islands Lands and Survey department.

Essential Information

Type Land	Status Pen/Con	MLS# 418978	Listing Type Low Density Residential
---------------------	--------------------------	-----------------------	--

Key Details

Width 120	Depth 130
Acreage 0.32	View Garden View