



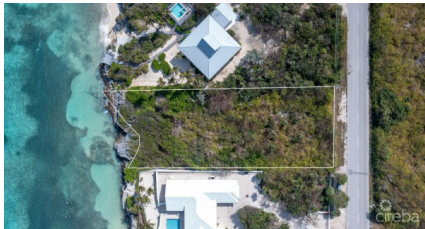
256 Crighton Building, Crewe Rd, PO BOX 1977,
Grand Cayman, KY1-1104, Cayman Islands
Phone: +1 (345) 949-7099
Fax: +1 (345) 949-6819
Email: info@cireba.com

Queen's Highway, Waterfront Parcel | 0.62 Acre

North East Coast / Colliers, Grand Cayman

MLS# 419014

US\$915,000





JAMES BOVELL
345-945-4000
james.bovell@remax.ky

Build Your Dream Home on This Exceptional Parcel of Land

This stunning piece of property offers the perfect canvas for your dream home. Elevated at 27 feet and gently sloping down to 13 feet closer to the water, this solid site requires no pilings or major substructure work, keeping construction costs lower. Positioned between two beautiful, existing homes, it provides both privacy and a welcoming sense of community.

With excellent road frontage and good depth, the property ensures a quiet, peaceful setting while still offering easy access. The sun sets behind the land, casting the perfect light to showcase the vibrant, ever-changing watercolors. Breathtaking, expansive views and refreshing tropical breezes complete the picture, making every day feel like a vacation.

Whether you're envisioning a cozy retreat or an expansive family estate, the possibilities are endless. The tranquil surroundings and prime location make this a truly special opportunity. With its unique topography, spectacular views, and proximity to the water, this is an offering you don't want to miss.

Build your dream home here and enjoy all the natural beauty this incredible land has to offer.

Reach out now!

Essential Information

| | | | |
|-------------|----------------|---------------|--------------------------------|
| Type | Status | MLS# | Listing Type |
| Land | Current | 419014 | Low Density Residential |

Key Details

| | |
|-------------|--------------------------------|
| Width | Depth |
| 107 | 301 |
| Acreage | View |
| 0.62 | Water Front, Water View |