



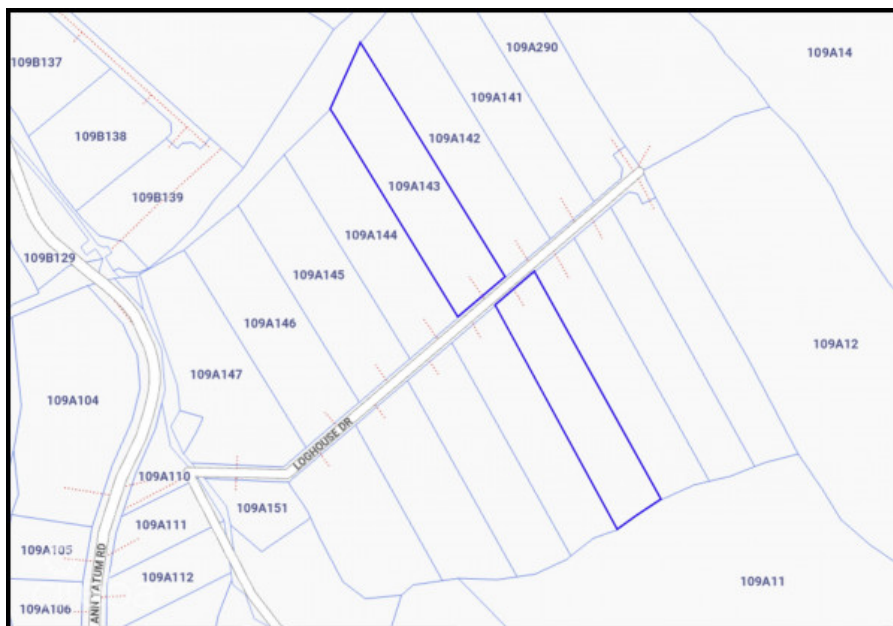
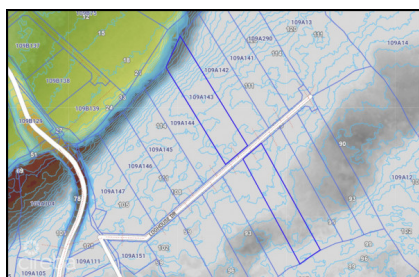
256 Crighton Building, Crewe Rd, PO BOX 1977,
Grand Cayman, KY1-1104, Cayman Islands
Phone: +1 (345) 949-7099
Fax: +1 (345) 949-6819
Email: info@cireba.com

Cayman Brac Loghouse Drive 2.74 Acres

Cayman Brac East, Cayman Brac

MLS# 419632

CI\$215,000



KRAIG HISLOP
345-949-7677
kraig@rainbow.ky

Situated on the coveted Bluff Edge of Cayman Brac's peaceful Eastern side, this rare 2.74-acre parcel offers exceptional privacy and captivating beauty. Perched over 110 feet above sea level, the property commands breathtaking, uninterrupted views of the shimmering Caribbean Sea. Its elevated position captures cooling breezes and showcases some of the island's most spectacular sunsets. With its expansive size, seclusion, and sought-after Bluff Edge location, this is the perfect site for a private estate, luxury villa, or investment in one of the Cayman Islands' most dramatic landscapes.

Essential Information

Type	Status	MLS#	Listing Type
Land	New	419632	Agriculture

Key Details

Width	Depth
230	1,025

The information contained herein has been furnished by the owner and or their nominee and represented by them to be accurate. The listing company, agent and CIREBA MLS disclaims any liability or responsibility for any inaccuracies, errors or omissions in the represented information and all the information contained herein is subject to errors, omissions, price changes, prior sale or withdrawal, without notice and is at all times subject to verification by the purchaser.

Acreage
2.74

View
Water View

Additional Feature

Zoning
Agriculture/Residential

Covenants
No

Road Frontage
230

Soil
Rock