



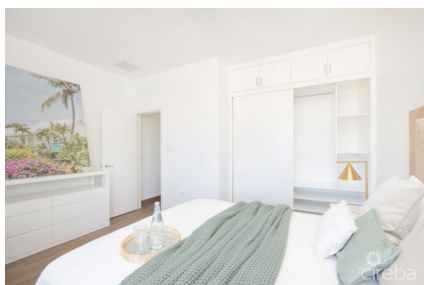
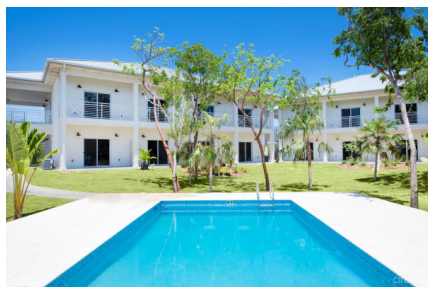
256 Crighton Building, Crewe Rd, PO BOX 1977,
Grand Cayman, KY1-1104, Cayman Islands
Phone: +1 (345) 949-7099
Fax: +1 (345) 949-6819
Email: info@cireba.com

Sea Mist Condos Unit 302 - Developer Financing

West Bay, Grand Cayman

MLS# 419170

CI\$419,900



**ALEX WOOD**

345-949-2100
alex@c21cayman.com

**DALE CRIGHTON**

345-949-5250
dalec@crightonproperties.com

Situated in the North Sound of Grand Cayman's landmark marine community of Morgan's Harbour, Sea Mist is the most recent completed project of its scale in West Bay. Comprising of 32 one bedroom units and positioned across four apartment blocks, Sea Mist has several key advantages. Features of Sea Mist include enhanced corner units, new construction, high elevation, and low strata fees. Its Proximity to Camana Bay and George Town combined with its quick entry to the short term rental market make this an appealing property for investors and first-time residents alike. Each unit is being sold fully furnished with tastefully curated furniture packages, which also allows for stamp duty savings at closing. The units at Sea Mist are designed to capture the best of island life. Perfectly formed to feel spacious, light and airy, the interiors have a modern feel in a neutral color palette. Wood tile floors Stainless steel appliances Granite countertops Patios/balconies Pool area & cabana Lush landscaping Peaceful doesn't always mean isolated. Not only is Sea Mist highly accessible to the Seven Mile Beach corridor and Camana Bay, but is also within walking distance of some of Cayman's best oceanfront dining, including restaurants like Calypso Grill and Tukka West. Designed to the highest standards, it is difficult to match the combination of facilities & quality in such a tranquil, convenient location in West Bay, a stone's throw away to Seven Mile Beach, Camana Bay and George Town.

Essential Information

Type	Status	MLS#	Listing Type
Residential	Current	419170	Condominiums

Key Details

Bed	Bath
1	1
View	
Pool View	
Year Built	Sq.Ft.
2022	621

Additional Feature

Den
No