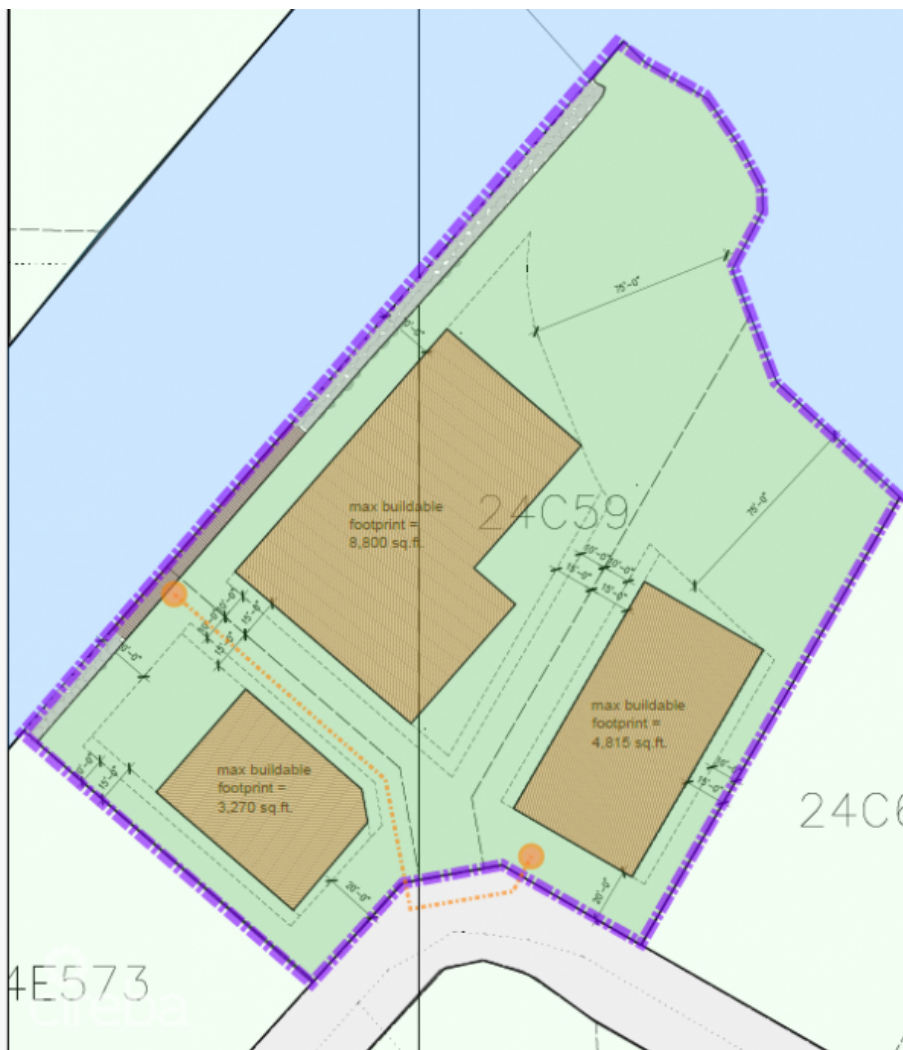
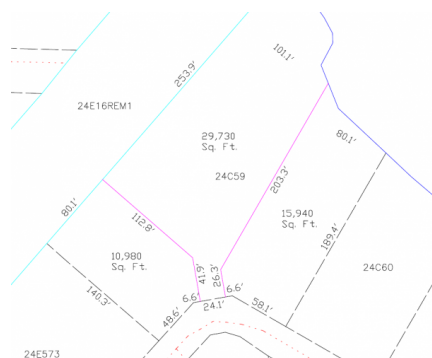


## Prospect/Spotts, Grand Cayman

MLS# 419190

**CI\$1,035,000**



**MICHAEL JOSEPH**  
345-749-4663  
michael@propertycayman.com

A truly unique waterfront offering, this 0.68-acre peninsula parcel features BOTH canal and North Sound frontage, boasting 225 feet of waterfront views. Located in the highly sought-after Patrick's Island community, this exceptional parcel is ideal for those seeking privacy, peace & quiet, stunning sunsets, and safe harbour yet with direct boating access. Its North-North-East orientation adds to its allure, enhancing energy efficiency and comfort. from the blazing heat. A unique opportunity, attractively priced. Subdivision pending, and part agent-owned.

## Essential Information

Type	Status	MLS#	Listing Type
Land	Current	419190	Low Density Residential

## Key Details

Width	Depth
112	259
Acreage	View
0.68	Water Front