



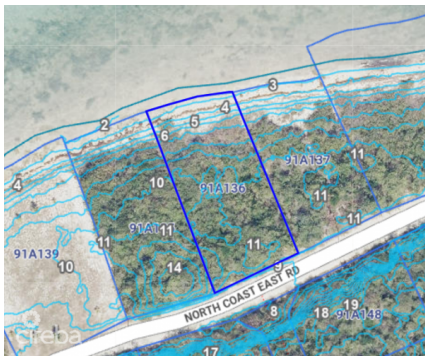
256 Crighton Building, Crewe Rd, PO BOX 1977,  
Grand Cayman, KY1-1104, Cayman Islands  
Phone: +1 (345) 949-7099  
Fax: +1 (345) 949-6819  
Email: info@cireba.com

## Betty Bay 0.38 Acre, Little Cayman Oceanfront Parcel

Little Cayman East, Little Cayman

MLS# 419211

**CI\$249,000**





**STEFAN PRIOR**  
stefan@propertycayman.com

Tucked away on the peaceful northeast coast of Little Cayman, this exceptional 0.38-acre parcel in the coveted Betty Bay offers the perfect canvas for your dream beach house. With an impressive 12 feet of elevation above sea level from the road, you're not just building a home — you're securing peace of mind. Imagine waking up in paradise to the gentle lull of waves and stepping out onto your very own stretch of white sandy beach. It's raw, untouched Caribbean beauty at its finest. Betty Bay is known for its tranquility, pristine environment, and exclusivity — making this a rare opportunity to own in one of Little Cayman's most desirable locations. Whether you're planning a private retreat or a barefoot luxury getaway, this parcel offers the space, elevation, and setting to make your vision a reality. Oceanfront parcels of this quality in Little Cayman don't come around often. Don't let this one slip by.

Essential Information

Type	Status	MLS#	Listing Type
Land	Current	419211	Little Cayman / Cayman Brac

Key Details

Width	Depth
90	190
Acreage	View
0.38	Beach Front