



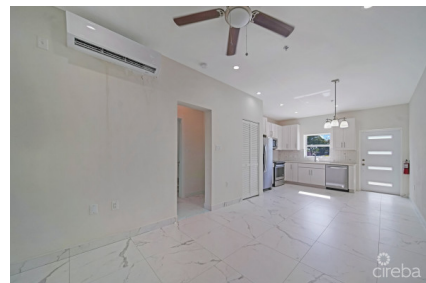
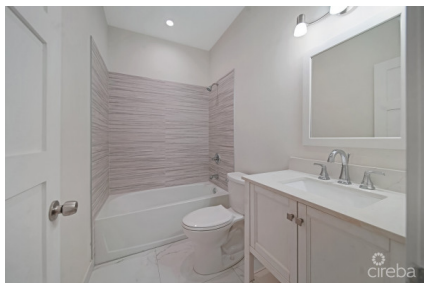
256 Crighton Building, Crewe Rd, PO BOX 1977,
Grand Cayman, KY1-1104, Cayman Islands
Phone: +1 (345) 949-7099
Fax: +1 (345) 949-6819
Email: info@cireba.com

The Point At Watercourse #8

West Bay, Grand Cayman

MLS# 419217

CI\$379,000





TRACY MOORE
tracy.moore@sothebysrealty.ky

The Point at Watercourse is a new and distinctive condominium development on the Northwest Point Road corridor of Grand Cayman. Located just minutes from 7 Mile Beach, the Point at Watercourse offers easy access to shopping, dining and recreation facilities. Villa # 8 is a single-story residence, thoughtfully designed for style and ease of living. The open layout and natural light in this unit work together to create a spacious yet comfortable ambiance. Interior finishes include 9 1/2ft ceilings, storage closets, porcelain floor and wall tiling, porcelain tile baseboards, solid wood doors, solid wood cabinetry, quartz countertops, energy efficient AC systems and stainless steel kitchen appliances. Engineered for strength and energy efficiency, the building itself is constructed of ICF blocks with steel reinforced and poured concrete centers. Each unit also has hurricane-rated windows & doors. Property amenities include a pool and pool deck.

Essential Information

Type	Status	MLS#	Listing Type
Residential	Pen/Con	419217	Condominiums

Key Details

Bed	Bath
1	1

View
Garden View

Year Built	Sq.Ft.	Pets Allowed:
2024	616	Yes

Additional Feature

Den	Floor Level	Furnished
No	1	No

Property Feature

Yes	Yes
Fenced Yard	Pool

The information contained herein has been furnished by the owner and or their nominee and represented by them to be accurate. The listing company, agent and CIREBA MLS disclaims any liability or responsibility for any inaccuracies, errors or omissions in the represented information and all the information contained herein is subject to errors, omissions, price changes, prior sale or withdrawal, without notice and is at all times subject to verification by the purchaser.