



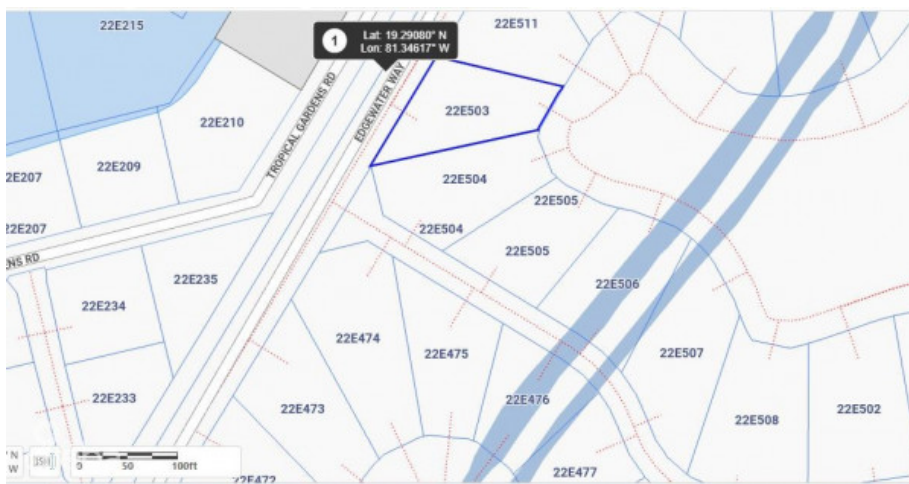
256 Crighton Building, Crewe Rd, PO BOX 1977,
Grand Cayman, KY1-1104, Cayman Islands
Phone: +1 (345) 949-7099
Fax: +1 (345) 949-6819
Email: info@cireba.com

Harbour Reach

Prospect/Spotts, Grand Cayman

MLS# 419227

CI\$495,000





JERMAINE PERKINS
jermaine@tridentproperties.ky

Prime location, in a sought-after community on the canal, in a serene environment under CI 500K, sounds like paradise & It Is paradise. Canal view house lot in the prestigious Harbour Reach community in Grand Harbour. Harbour Reach is Canal lot community with direct access to the North Sound with a cantilevered 40 foot dock, this and these lots are all filled with compacted aggregate and safety retained by a keystone seawall which means there is no need for the added expense of pilings. Harbour Reach offers a 24-7 manned gatehouse with strong covenants to ensure high standards and quality upliftment of this beautifully landscaped community conveniently located within walking distance of Harbour Walk complex & Grand Harbour Shopping Complex with restaurants, café, Hurleys supermarket. Agent Owned

Essential Information

Type	Status	MLS#	Listing Type
Land	Current	419227	Low Density Residential

Key Details

Width	Depth
95	135
Acreage	View
0.26	Canal View