



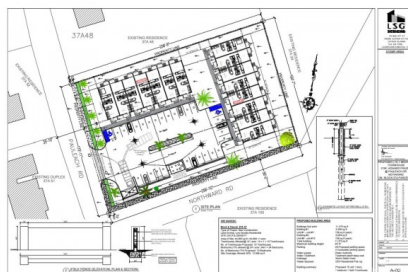
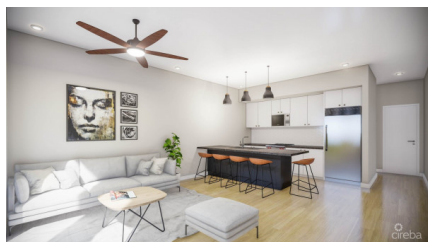
256 Crighton Building, Crewe Rd, PO BOX 1977,
Grand Cayman, KY1-1104, Cayman Islands
Phone: +1 (345) 949-7099
Fax: +1 (345) 949-6819
Email: info@cireba.com

North Palm Heights - End Unit #7

Savannah / Lower Valley, Grand Cayman

MLS# 419276

CI\$335,000



YOANA BONILLA
yoana@c21cayman.com

Welcome to North Palm Heights a brand-new pre-construction development offering 15 exclusive 1-bedroom, 1-bathroom units, each with 760 sq. ft. of thoughtfully designed modern living. Why choose an end unit? Enjoy added privacy, extra natural light from additional windows, and only one shared wall—enhancing your comfort and tranquility. It's a smart investment and an even better place to call home. Located in the peaceful Northward area, this contemporary complex is ideal for first-time buyers, downsizers, or savvy investors looking for long-term value in a growing community. Refined finishes and elegant interiors make North Palm Heights a standout choice in Cayman. Opportunities like this are rare. Don't wait—secure your spot in this stylish new community today.

Essential Information

Type	Status	MLS#	Listing Type
Residential	Current	419276	Condominiums

Key Details

Bed	Bath	
1	1	
View		
Garden View		
Year Built	Sq.Ft.	Pets Allowed:
2025	760	Yes

Additional Feature

Den	Floor Level	Furnished
No	1	Partially

Property Feature

Yes	Yes
Carport	Fenced Yard