

Harbour Reach Waterfront Lot - Owner Financing

Prospect/Spotts, Grand Cayman

MLS# 416084

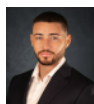
CI\$825,000



DALE CRIGHTON

345-949-5250

dalec@crightonproperties.com



CONOR CRIGHTON

345-949-5250

conorc@crightongroup.com

Boasting 137 feet of water frontage and a custom 40 foot dock this waterfront parcel is one of the few lots that offers unencumbered views east into the North Sound. As the jewel in Grand Harbour's crown, Harbour Reach provides its owners with the security of an attractive, dual lane entrance-way which leads through a manned gatehouse to heavily landscaped areas, intertwined with jogging trails and walking paths. The development is protected by strong covenants, setting high standards for home design, construction and maintenance, thereby enhancing future appreciation for Harbour Reach's owners. Photos courtesy of www.caymanlandinfo.ky.

Essential Information

The information contained herein has been furnished by the owner and or their nominee and represented by them to be accurate. The listing company, agent and CIREBA MLS disclaims any liability or responsibility for any inaccuracies, errors or omissions in the represented information and all the information contained herein is subject to errors, omissions, price changes, prior sale or withdrawal, without notice and is at all times subject to verification by the purchaser.

Type	Status	MLS#	Listing Type
Land	Back On The Market	416084	Low Density Residential

Key Details

Width	Depth
137	160
Acreage	View
0.39	Water Front