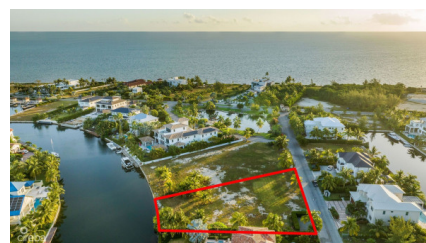
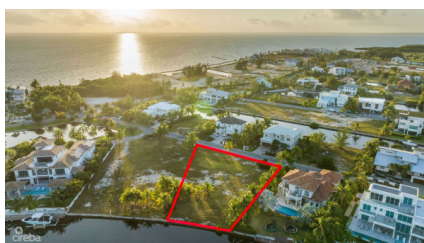
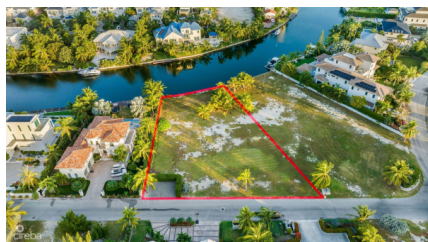


Great Laliqye Quay Land - 0.62 Acres

Seven Mile Corridor, Grand Cayman

MLS# 417424

US\$2,900,000



**STEFAN COHEN**

stefan.cohen@theagencyre.com

**CATHY WILLIAMS**

345 623-9999

cathy@williams2realestate.com

Introducing one of the remaining parcels nestled within the esteemed Laliue Quay of Crystal Harbour. Spanning an impressive 0.62 acres, this rare opportunity offers the perfect canvas for crafting your dream home amidst one of the most exclusive waterfront communities in the Cayman Islands. Imagine waking up to serene waterfront views, with your private dock ready to host your yacht or boat. The property comes equipped with a retaining wall, making the process of building your dock a seamless reality. Located on the iconic Seven Mile Beach Corridor, you'll be within easy reach of world-class beaches, premier golf courses, gourmet dining, and vibrant entertainment. Whether you're envisioning a contemporary masterpiece or a timeless retreat infused with Caribbean charm, this oversized lot provides the ideal setting for an unparalleled lifestyle. This is more than a parcel of land – it's your invitation to build a life of luxury, privacy, and elegance in one of the most sought-after communities in the Cayman Islands. Don't miss out on this extraordinary opportunity to turn your vision into reality.

Essential Information

Type
Land

Status
Pen/Con

MLS#
417424

Listing Type
**Low Density
Residential**

Key Details

Width
176

Depth
234

Acreage
0.62

View
Canal Front